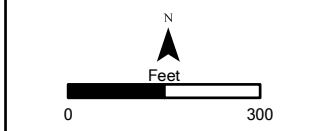
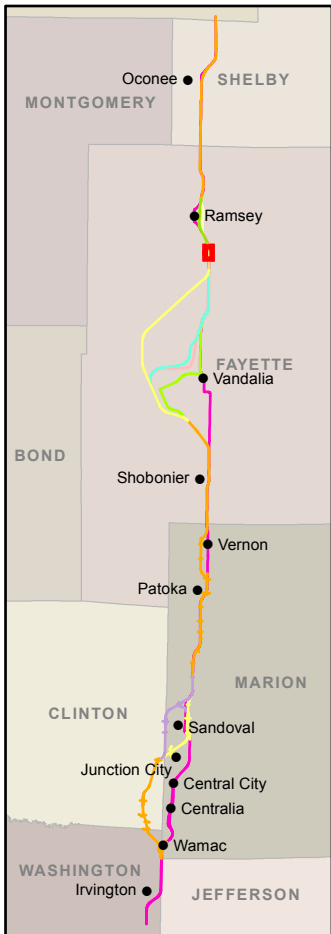


- Legend**
- Existing U.S. 51
 - U.S. 51 Build Alternative
 - CS Alt 1
 - CS Alt 2
 - V Alt 1
 - V Alt 2
 - V Alt 3
 - V Alt 4
 - Ramsey Creek Option A
 - Ramsey Creek Option B
 - R Alt 1
 - R Alt 2
 - Alternative Centerline
 - Alternative Right-of-Way
 - Biologically Significant Stream
 - Stream
 - Centennial Farm
 - Sesquicentennial Farm
 - State Park
 - INHS High Quality Wetland
 - INHS Wetland
 - INAL Site
 - Uneconomic Remnant
 - Important Use Area
 - REC Site
 - Floodplain
 - County Boundary
 - Municipality Boundary
 - Grade Separation
 - Noise Receptor
 - Monitored Noise Receptor
 - Quarry
 - CERCLIS Site
 - National Register Historic Site
 - Access Closures
 - Public Facility
 - Major Employers
 - Displacements**
 - Residence
 - Residential Outbuilding
 - Farm Residence
 - Farm Outbuilding
 - Farm Business
 - Farm Business Outbuilding
 - Business
 - Access Impacts**
 - Residence
 - Residential Outbuilding
 - Farm Residence
 - Farm Outbuilding
 - Farm Business
 - Farm Business Outbuilding
 - Public Facility

Sources:
 Illinois Department of Natural Resources, Illinois
 Natural History Survey, U.S. Geological Survey
 Data to be used for reference only

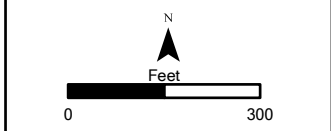


Aerial Background Copyright: © 2012 Esri, DeLorme, NAVTEQ, TomTom
 Source: Esri, DigitalGlobe, GeoEye, i-cubed, USDA, USGS, AEX, Getmapping, Aerogrid, IGN, IGP, swisstopo, and the GIS User Community

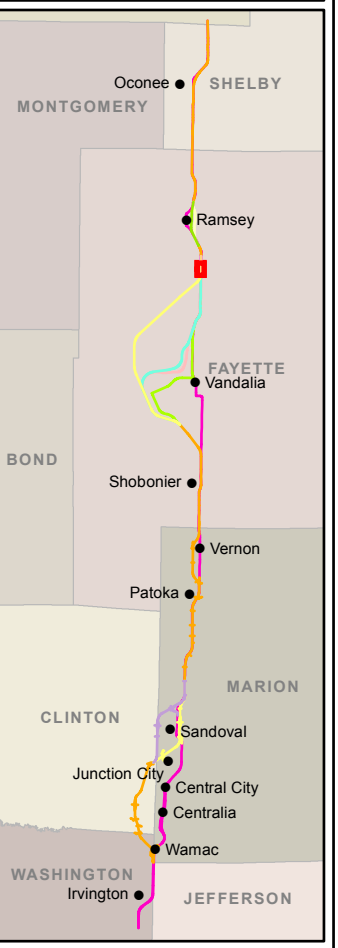


- Legend**
- Existing U.S. 51
 - U.S. 51 Build Alternative
 - CS Alt 1
 - CS Alt 2
 - V Alt 1
 - V Alt 2
 - V Alt 3
 - V Alt 4
 - Ramsey Creek Option A
 - Ramsey Creek Option B
 - R Alt 1
 - R Alt 2
 - Alternative Centerline
 - Alternative Right-of-Way
 - Biologically Significant Stream
 - Stream
 - Centennial Farm
 - Sesquicentennial Farm
 - State Park
 - INHS High Quality Wetland
 - INHS Wetland
 - INAI Site
 - Uneconomic Remnant
 - Important Use Area
 - REC Site
 - Floodplain
 - County Boundary
 - Municipality Boundary
 - Grade Separation
 - Noise Receptor
 - Monitored Noise Receptor
 - Quarry
 - CERCLIS Site
 - National Register Historic Site
 - Access Closures
 - Public Facility
 - Major Employers
 - Displacements**
 - Residence
 - Residential Outbuilding
 - Farm Residence
 - Farm Outbuilding
 - Farm Business
 - Farm Business Outbuilding
 - Business
 - Access Impacts**
 - Residence
 - Residential Outbuilding
 - Farm Residence
 - Farm Outbuilding
 - Farm Business
 - Farm Business Outbuilding
 - Public Facility

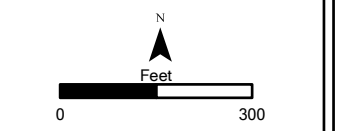
Sources:
 Illinois Department of Natural Resources, Illinois
 Natural History Survey, U.S. Geological Survey
 Data to be used for reference only



SHEET 157 OF 185
**ENVIRONMENTAL
 RESOURCES**



- Legend**
- Existing U.S. 51
 - U.S. 51 Build Alternative
 - CS Alt 1
 - CS Alt 2
 - V Alt 1
 - V Alt 2
 - V Alt 3
 - V Alt 4
 - Ramsey Creek Option A
 - Ramsey Creek Option B
 - R Alt 1
 - R Alt 2
 - Alternative Centerline
 - Alternative Right-of-Way
 - Biologically Significant Stream
 - Stream
 - Centennial Farm
 - Sesquicentennial Farm
 - State Park
 - INHS High Quality Wetland
 - INHS Wetland
 - INA Site
 - Uneconomic Remnant
 - Important Use Area
 - REC Site
 - Floodplain
 - County Boundary
 - Municipality Boundary
 - Grade Separation
 - Noise Receptor
 - Monitored Noise Receptor
 - Quarry
 - CERCLIS Site
 - National Register Historic Site
 - Access Closures
 - Public Facility
 - Major Employers
 - Displacements**
 - Residence
 - Residential Outbuilding
 - Farm Residence
 - Farm Outbuilding
 - Farm Business
 - Farm Business Outbuilding
 - Business
 - Access Impacts**
 - Residence
 - Residential Outbuilding
 - Farm Residence
 - Farm Outbuilding
 - Farm Business
 - Farm Business Outbuilding
 - Public Facility
- Sources:
 Illinois Department of Natural Resources, Illinois Natural History Survey, U.S. Geological Survey
 Data to be used for reference only

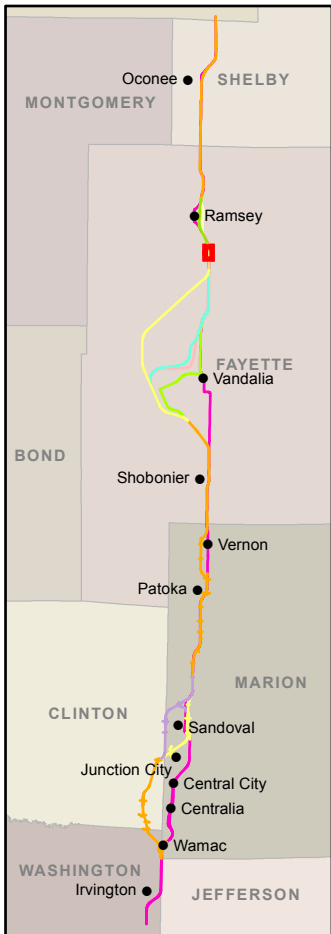
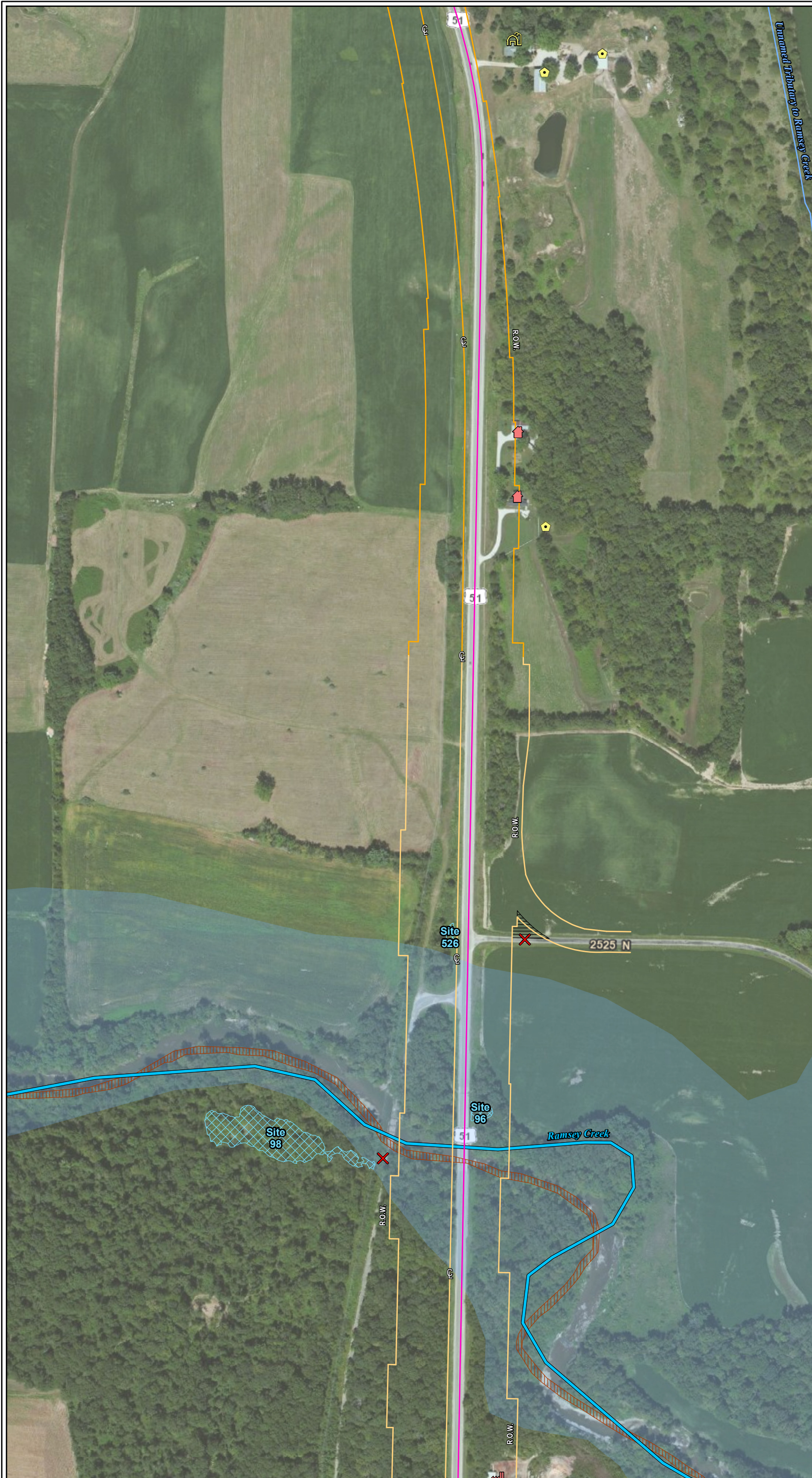


SHEET 158 OF 185

**ENVIRONMENTAL
RESOURCES**

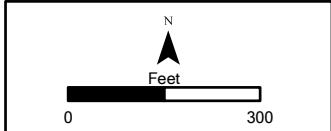


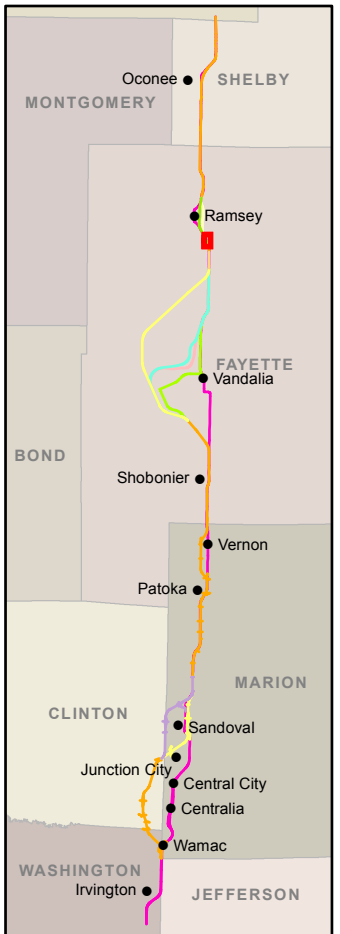
Aerial Background Copyright: © 2012 Esri, DeLorme, NAVTEQ, TomTom
 Source: Esri, DigitalGlobe, GeoEye, i-cubed, USDA, USGS, AEX, Getmapping, Aerogrid, IGN, IGP, swisstopo, and the GIS User Community



- Legend**
- Existing U.S. 51
 - U.S. 51 Build Alternative
 - CS Alt 1
 - CS Alt 2
 - V Alt 1
 - V Alt 2
 - V Alt 3
 - V Alt 4
 - Ramsey Creek Option A
 - Ramsey Creek Option B
 - R Alt 1
 - R Alt 2
 - Alternative Centerline
 - Alternative Right-of-Way
 - Biologically Significant Stream
 - Stream
 - Centennial Farm
 - Sesquicentennial Farm
 - State Park
 - INHS High Quality Wetland
 - INHS Wetland
 - INAI Site
 - Uneconomic Remnant
 - Important Use Area
 - REC Site
 - Floodplain
 - County Boundary
 - Municipality Boundary
 - Grade Separation
 - Noise Receptor
 - Monitored Noise Receptor
 - Quarry
 - CERCLIS Site
 - National Register Historic Site
 - Access Closures
 - Public Facility
 - Major Employers
 - Displacements**
 - Residence
 - Residential Outbuilding
 - Farm Residence
 - Farm Outbuilding
 - Farm Business
 - Farm Business Outbuilding
 - Business
 - Access Impacts**
 - Residence
 - Residential Outbuilding
 - Farm Residence
 - Farm Outbuilding
 - Farm Business
 - Farm Business Outbuilding
 - Public Facility

Sources:
 Illinois Department of Natural Resources, Illinois
 Natural History Survey, U.S. Geological Survey
 Data to be used for reference only

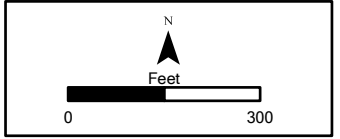




Legend

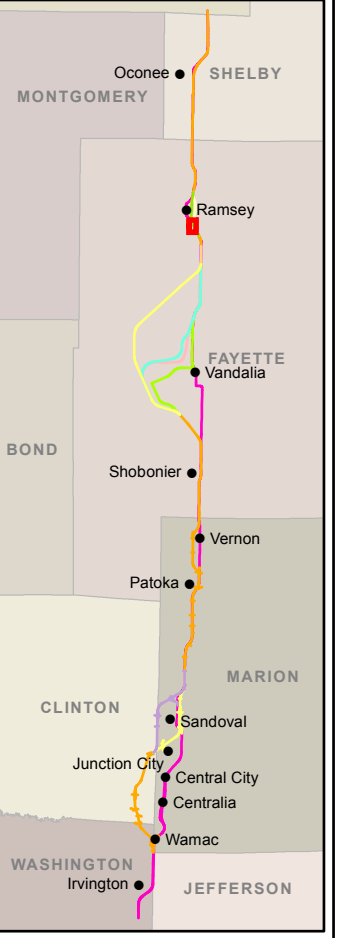
- Existing U.S. 51
- U.S. 51 Build Alternative
- CS Alt 1
- CS Alt 2
- V Alt 1
- V Alt 2
- V Alt 3
- V Alt 4
- Ramsey Creek Option A
- Ramsey Creek Option B
- R Alt 1
- R Alt 2
- Alternative Centerline
- Alternative Right-of-Way
- Biologically Significant Stream
- Stream
- Centennial Farm
- Sesquicentennial Farm
- State Park
- INHS High Quality Wetland
- INHS Wetland
- INAI Site
- Uneconomic Remnant
- Important Use Area
- REC Site
- Floodplain
- County Boundary
- Municipality Boundary
- Grade Separation
- Noise Receptor
- Monitored Noise Receptor
- Quarry
- CERCLIS Site
- National Register Historic Site
- Access Closures
- Public Facility
- Major Employers
- Displacements**
- Residence
- Residential Outbuilding
- Farm Residence
- Farm Outbuilding
- Farm Business
- Farm Business Outbuilding
- Business
- Access Impacts**
- Residence
- Residential Outbuilding
- Farm Residence
- Farm Outbuilding
- Farm Business
- Farm Business Outbuilding
- Public Facility

Sources:
 Illinois Department of Natural Resources, Illinois Natural History Survey, U.S. Geological Survey
 Data to be used for reference only



SHEET 160 OF 185

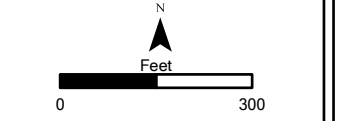
**ENVIRONMENTAL
RESOURCES**



Legend

- Existing U.S. 51
- U.S. 51 Build Alternative
- CS Alt 1
- CS Alt 2
- V Alt 1
- V Alt 2
- V Alt 3
- V Alt 4
- Ramsey Creek Option A
- Ramsey Creek Option B
- R Alt 1
- R Alt 2
- Alternative Centerline
- Alternative Right-of-Way
- Biologically Significant Stream
- Stream
- Centennial Farm
- Sesquicentennial Farm
- State Park
- INHS High Quality Wetland
- INHS Wetland
- INAI Site
- Uneconomic Remnant
- Important Use Area
- REC Site
- Floodplain
- County Boundary
- Municipality Boundary
- Grade Separation
- Noise Receptor
- Monitored Noise Receptor
- Quarry
- CERCLIS Site
- National Register Historic Site
- Access Closures
- Public Facility
- Major Employers
- Displacements**
- Residence
- Residential Outbuilding
- Farm Residence
- Farm Outbuilding
- Farm Business
- Farm Business Outbuilding
- Business
- Access Impacts**
- Residence
- Residential Outbuilding
- Farm Residence
- Farm Outbuilding
- Farm Business
- Farm Business Outbuilding
- Public Facility

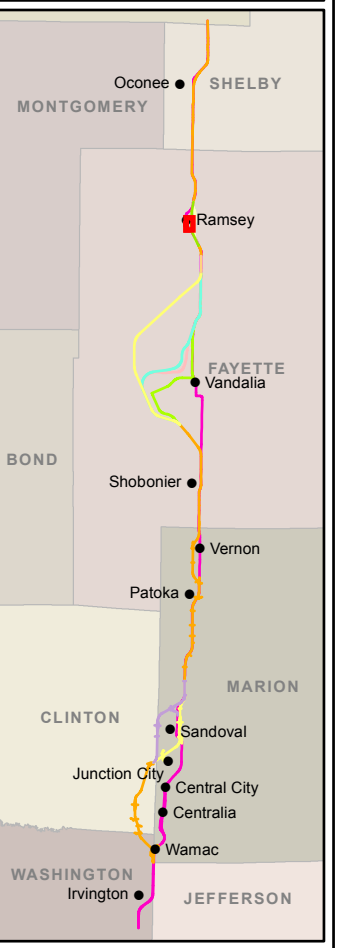
Sources:
 Illinois Department of Natural Resources, Illinois Natural History Survey, U.S. Geological Survey
 Data to be used for reference only



SHEET 161 OF 185
ENVIRONMENTAL RESOURCES



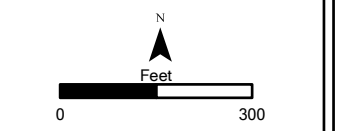
Aerial Background Copyright: © 2012 Esri, DeLorme, NAVTEQ, TomTom
 Source: Esri, DigitalGlobe, GeoEye, i-cubed, USDA, USGS, AEX, Getmapping, Aerogrid, IGN, IGP, swisstopo, and the GIS User Community



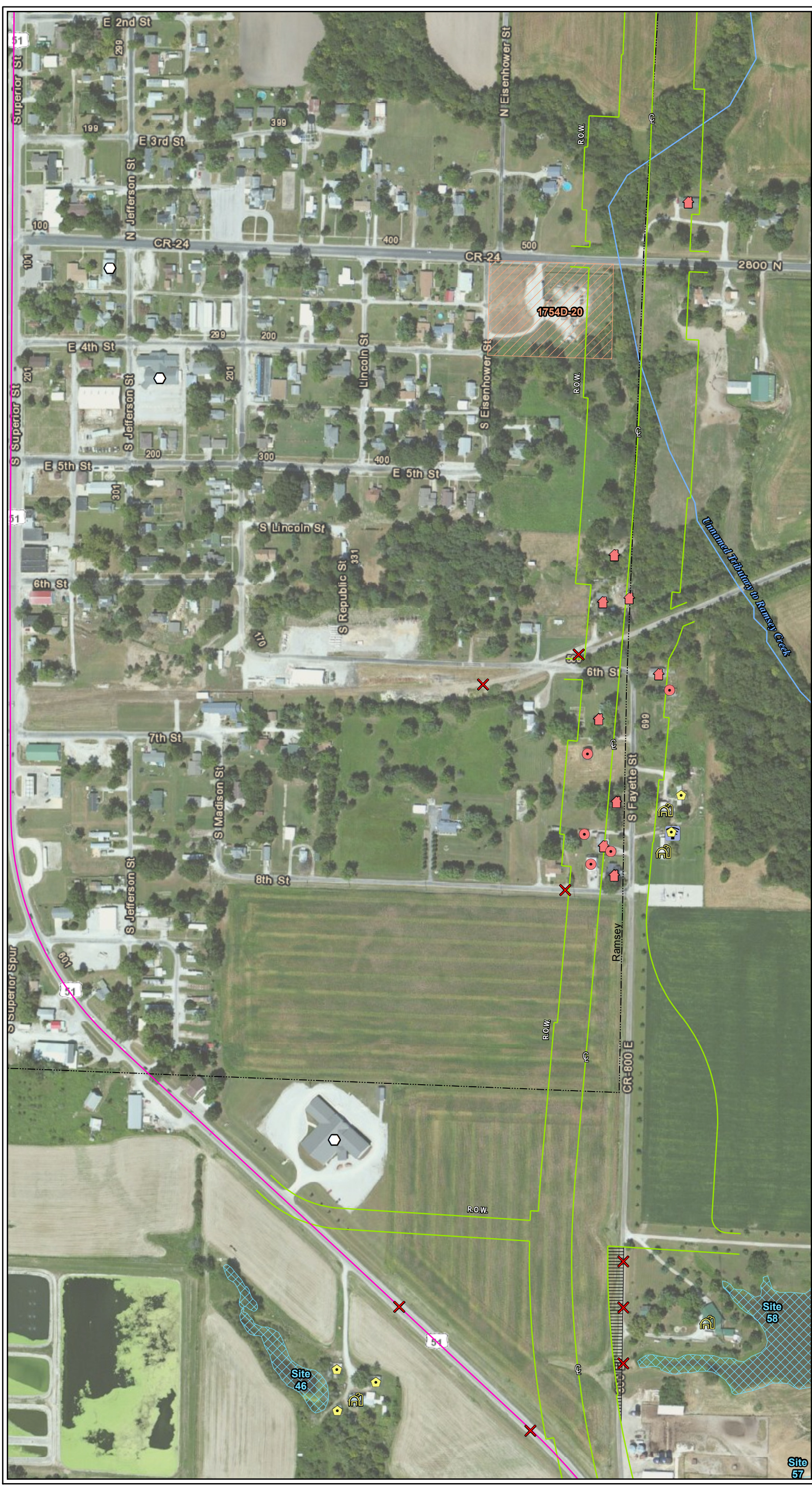
Legend

- Existing U.S. 51
- U.S. 51 Build Alternative
- CS Alt 1
- CS Alt 2
- V Alt 1
- V Alt 2
- V Alt 3
- V Alt 4
- Ramsey Creek Option A
- Ramsey Creek Option B
- R Alt 1
- R Alt 2
- Alternative Centerline
- Alternative Right-of-Way
- Biologically Significant Stream
- Stream
- Centennial Farm
- Sesquicentennial Farm
- State Park
- INHS High Quality Wetland
- INHS Wetland
- INAI Site
- Uneconomic Remnant
- Important Use Area
- REC Site
- Floodplain
- County Boundary
- Municipality Boundary
- Grade Separation
- Noise Receptor
- Monitored Noise Receptor
- Quarry
- CERCLIS Site
- National Register Historic Site
- Access Closures
- Public Facility
- Major Employers
- Displacements**
- Residence
- Residential Outbuilding
- Farm Residence
- Farm Outbuilding
- Farm Business
- Farm Business Outbuilding
- Business
- Access Impacts**
- Residence
- Residential Outbuilding
- Farm Residence
- Farm Outbuilding
- Farm Business
- Farm Business Outbuilding
- Public Facility

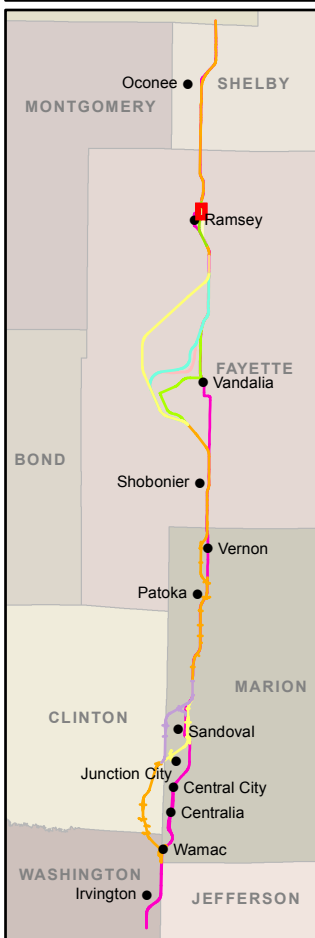
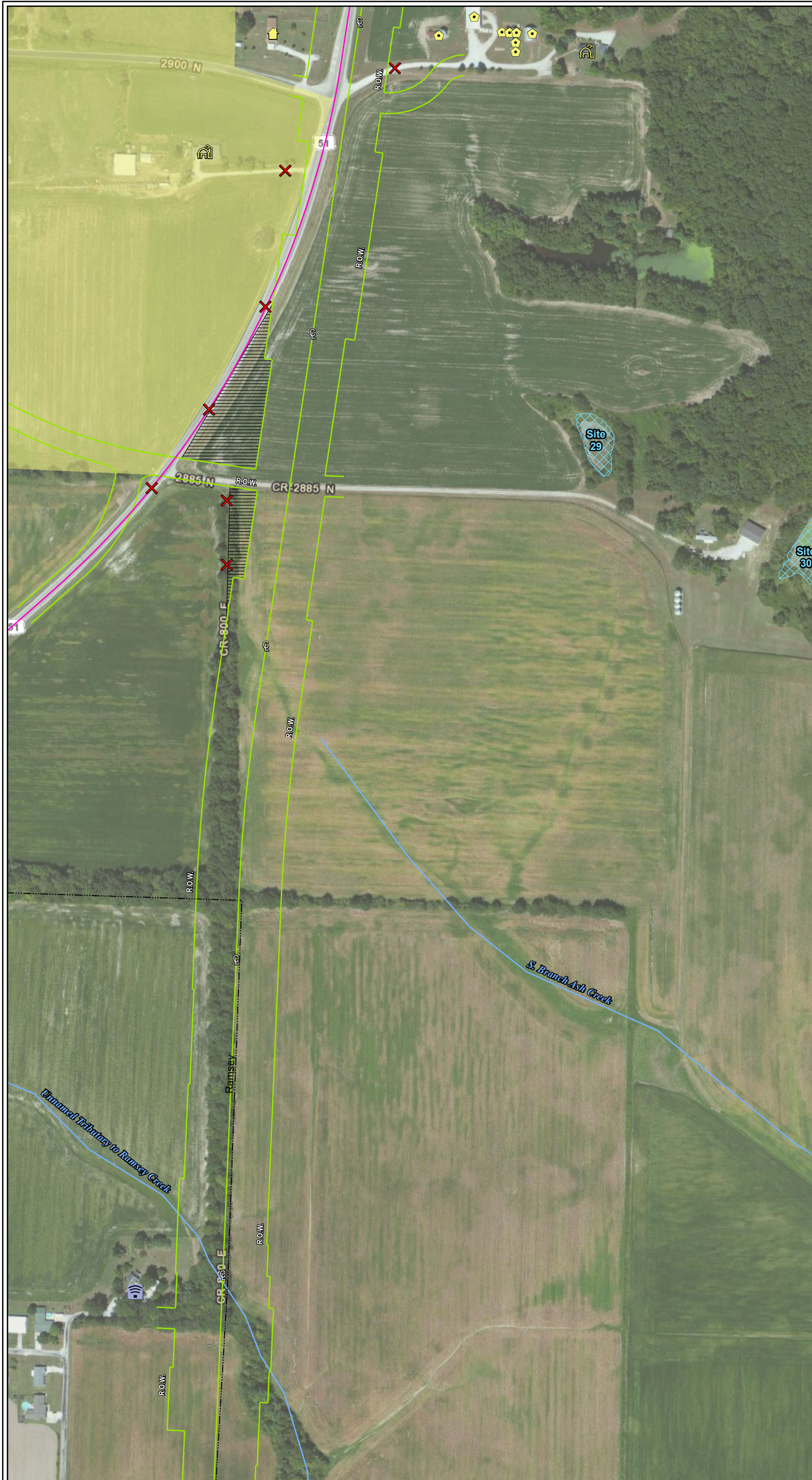
Sources:
 Illinois Department of Natural Resources, Illinois Natural History Survey, U.S. Geological Survey
 Data to be used for reference only



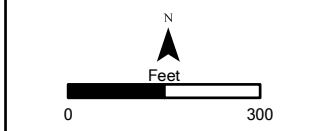
SHEET 162 OF 185
ENVIRONMENTAL RESOURCES



Aerial Background Copyright: © 2012 Esri, DeLorme, NAVTEQ, TomTom
 Source: Esri, DigitalGlobe, GeoEye, i-cubed, USDA, USGS, AEX, Getmapping, Aerogrid, IGN, IGP, swisstopo, and the GIS User Community



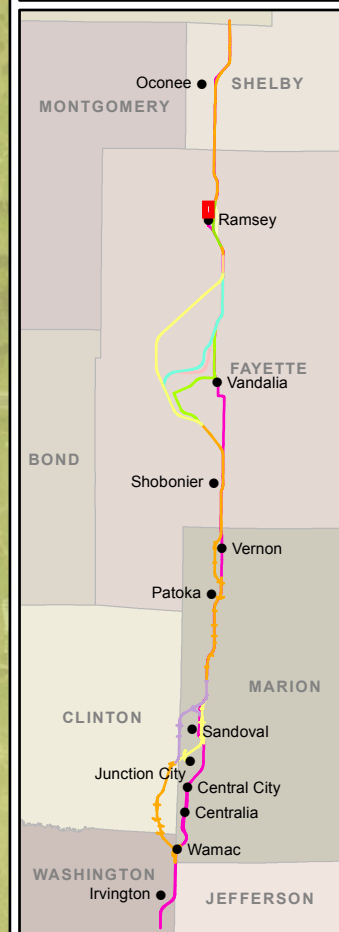
- Legend**
- Existing U.S. 51
 - U.S. 51 Build Alternative
 - CS Alt 1
 - CS Alt 2
 - V Alt 1
 - V Alt 2
 - V Alt 3
 - V Alt 4
 - Ramsey Creek Option A
 - Ramsey Creek Option B
 - R Alt 1
 - R Alt 2
 - C Alternative Centerline
 - ROW Alternative Right-of-Way
 - Stream Biologically Significant Stream
 - Stream Stream
 - Centennial Farm Centennial Farm
 - Sesquicentennial Farm Sesquicentennial Farm
 - State Park State Park
 - INHS High Quality Wetland INHS High Quality Wetland
 - INHS Wetland INHS Wetland
 - INAI Site INAI Site
 - Uneconomic Remnant Uneconomic Remnant
 - Important Use Area Important Use Area
 - REC Site REC Site
 - Floodplain Floodplain
 - County Boundary County Boundary
 - Municipality Boundary Municipality Boundary
 - Grade Separation Grade Separation
 - Noise Receptor Noise Receptor
 - Monitored Noise Receptor Monitored Noise Receptor
 - Quarry Quarry
 - CERCLIS Site CERCLIS Site
 - National Register Historic Site National Register Historic Site
 - X Access Closures
 - Public Facility Public Facility
 - Major Employers Major Employers
 - Displacements**
 - Residence
 - Residential Outbuilding
 - Farm Residence
 - Farm Outbuilding
 - Farm Business
 - Farm Business Outbuilding
 - Business
 - Access Impacts**
 - Residence
 - Residential Outbuilding
 - Farm Residence
 - Farm Outbuilding
 - Farm Business
 - Farm Business Outbuilding
 - Public Facility
- Sources:
 Illinois Department of Natural Resources, Illinois Natural History Survey, U.S. Geological Survey
 Data to be used for reference only



SHEET 163 OF 185

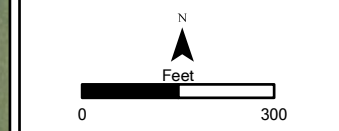
**ENVIRONMENTAL
RESOURCES**

Aerial Background Copyright: © 2012 Esri, DeLorme, NAVTEQ, TomTom
 Source: Esri, DigitalGlobe, GeoEye, i-cubed, USDA, USGS, AEX, Getmapping, Aerogrid, IGN, IGP, swisstopo, and the GIS User Community



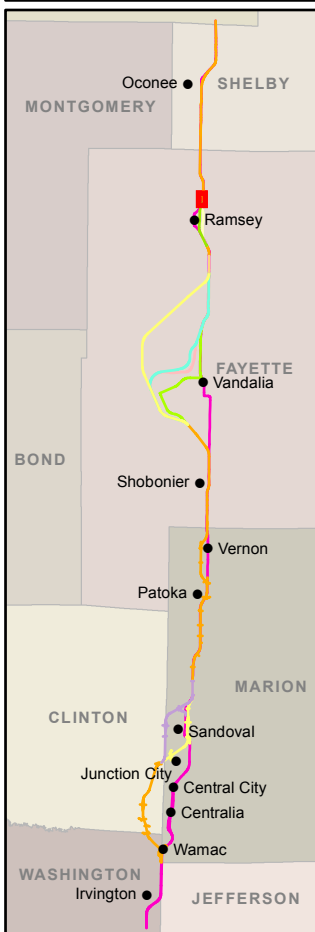
- Legend**
- Existing U.S. 51
 - U.S. 51 Build Alternative
 - CS Alt 1
 - CS Alt 2
 - V Alt 1
 - V Alt 2
 - V Alt 3
 - V Alt 4
 - Ramsey Creek Option A
 - Ramsey Creek Option B
 - R Alt 1
 - R Alt 2
 - Alternative Centerline
 - Alternative Right-of-Way
 - Biologically Significant Stream
 - Stream
 - Centennial Farm
 - Sesquicentennial Farm
 - State Park
 - INHS High Quality Wetland
 - INHS Wetland
 - INAI Site
 - Uneconomic Remnant
 - Important Use Area
 - REC Site
 - Floodplain
 - County Boundary
 - Municipality Boundary
 - Grade Separation
 - Noise Receptor
 - Monitored Noise Receptor
 - Quarry
 - CERCLIS Site
 - National Register Historic Site
 - Access Closures
 - Public Facility
 - Major Employers
 - Displacements**
 - Residence
 - Residential Outbuilding
 - Farm Residence
 - Farm Outbuilding
 - Farm Business
 - Farm Business Outbuilding
 - Business
 - Access Impacts**
 - Residence
 - Residential Outbuilding
 - Farm Residence
 - Farm Outbuilding
 - Farm Business
 - Farm Business Outbuilding
 - Public Facility

Sources:
 Illinois Department of Natural Resources, Illinois
 Natural History Survey, U.S. Geological Survey
 Data to be used for reference only



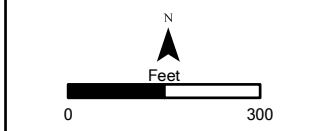
SHEET 164 OF 185

**ENVIRONMENTAL
 RESOURCES**



- Legend**
- Existing U.S. 51
 - U.S. 51 Build Alternative
 - CS Alt 1
 - CS Alt 2
 - V Alt 1
 - V Alt 2
 - V Alt 3
 - V Alt 4
 - Ramsey Creek Option A
 - Ramsey Creek Option B
 - R Alt 1
 - R Alt 2
 - Alternative Centerline
 - Alternative Right-of-Way
 - Biologically Significant Stream
 - Stream
 - Centennial Farm
 - Sesquicentennial Farm
 - State Park
 - INHS High Quality Wetland
 - INHS Wetland
 - INA Site
 - Uneconomic Remnant
 - Important Use Area
 - REC Site
 - Floodplain
 - County Boundary
 - Municipality Boundary
 - Grade Separation
 - Noise Receptor
 - Monitored Noise Receptor
 - Quarry
 - CERCLIS Site
 - National Register Historic Site
 - Access Closures
 - Public Facility
 - Major Employers
 - Displacements**
 - Residence
 - Residential Outbuilding
 - Farm Residence
 - Farm Outbuilding
 - Farm Business
 - Farm Business Outbuilding
 - Business
 - Access Impacts**
 - Residence
 - Residential Outbuilding
 - Farm Residence
 - Farm Outbuilding
 - Farm Business
 - Farm Business Outbuilding
 - Public Facility

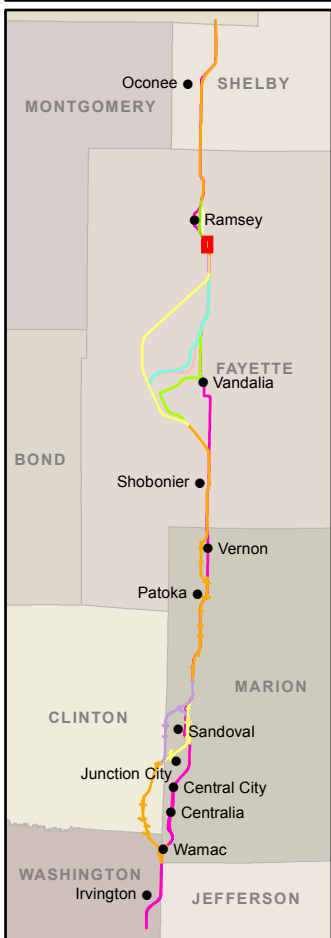
Sources:
 Illinois Department of Natural Resources, Illinois
 Natural History Survey, U.S. Geological Survey
 Data to be used for reference only



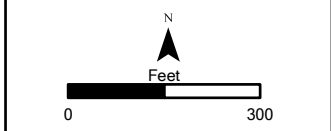
SHEET 165 OF 185
**ENVIRONMENTAL
 RESOURCES**



Aerial Background Copyright: © 2012 Esri, DeLorme, NAVTEQ, TomTom
 Source: Esri, DigitalGlobe, GeoEye, I-cubed, USDA, USGS, AEX, Getmapping, Aerogrid, IGN, IGP, swisstopo, and the GIS User Community

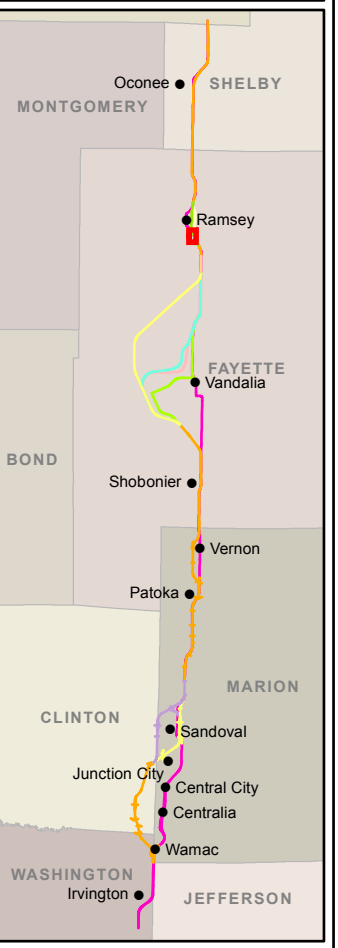


- Legend**
- Existing U.S. 51
 - U.S. 51 Build Alternative
 - CS Alt 1
 - CS Alt 2
 - V Alt 1
 - V Alt 2
 - V Alt 3
 - V Alt 4
 - Ramsey Creek Option A
 - Ramsey Creek Option B
 - R Alt 1
 - R Alt 2
 - Alternative Centerline
 - Alternative Right-of-Way
 - Biologically Significant Stream
 - Stream
 - Centennial Farm
 - Sesquicentennial Farm
 - State Park
 - INHS High Quality Wetland
 - INHS Wetland
 - INAI Site
 - Uneconomic Remnant
 - Important Use Area
 - REC Site
 - Floodplain
 - County Boundary
 - Municipality Boundary
 - Grade Separation
 - Noise Receptor
 - Monitored Noise Receptor
 - Quarry
 - CERCLIS Site
 - National Register Historic Site
 - Access Closures
 - Public Facility
 - Major Employers
 - Displacements**
 - Residence
 - Residential Outbuilding
 - Farm Residence
 - Farm Outbuilding
 - Farm Business
 - Farm Business Outbuilding
 - Business
 - Access Impacts**
 - Residence
 - Residential Outbuilding
 - Farm Residence
 - Farm Outbuilding
 - Farm Business
 - Farm Business Outbuilding
 - Public Facility
- Sources:
 Illinois Department of Natural Resources, Illinois Natural History Survey, U.S. Geological Survey
 Data to be used for reference only



SHEET 166 OF 185
ENVIRONMENTAL RESOURCES

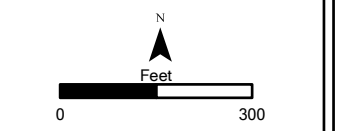
Aerial Background Copyright: © 2012 Esri, DeLorme, NAVTEQ, TomTom
 Source: Esri, DigitalGlobe, GeoEye, i-cubed, USDA, USGS, AEX, Getmapping, Aerogrid, IGN, IGP, swisstopo, and the GIS User Community



Legend

- Existing U.S. 51
- U.S. 51 Build Alternative
- CS Alt 1
- CS Alt 2
- V Alt 1
- V Alt 2
- V Alt 3
- V Alt 4
- Ramsey Creek Option A
- Ramsey Creek Option B
- R Alt 1
- R Alt 2
- ⊙ Alternative Centerline
- ⊙ Alternative Right-of-Way
- Biologically Significant Stream
- Stream
- Centennial Farm
- Sesquicentennial Farm
- State Park
- INHS High Quality Wetland
- INHS Wetland
- INAI Site
- Uneconomic Remnant
- Important Use Area
- REC Site
- Floodplain
- County Boundary
- Municipality Boundary
- Grade Separation
- ⊙ Noise Receptor
- ⊙ Monitored Noise Receptor
- ⊙ Quarry
- ⊙ CERCLIS Site
- ⊙ National Register Historic Site
- ⊙ Access Closures
- ⊙ Public Facility
- ⊙ Major Employers
- Displacements**
- ⊙ Residence
- ⊙ Residential Outbuilding
- ⊙ Farm Residence
- ⊙ Farm Outbuilding
- ⊙ Farm Business
- ⊙ Farm Business Outbuilding
- ⊙ Business
- Access Impacts**
- ⊙ Residence
- ⊙ Residential Outbuilding
- ⊙ Farm Residence
- ⊙ Farm Outbuilding
- ⊙ Farm Business
- ⊙ Farm Business Outbuilding
- ⊙ Public Facility

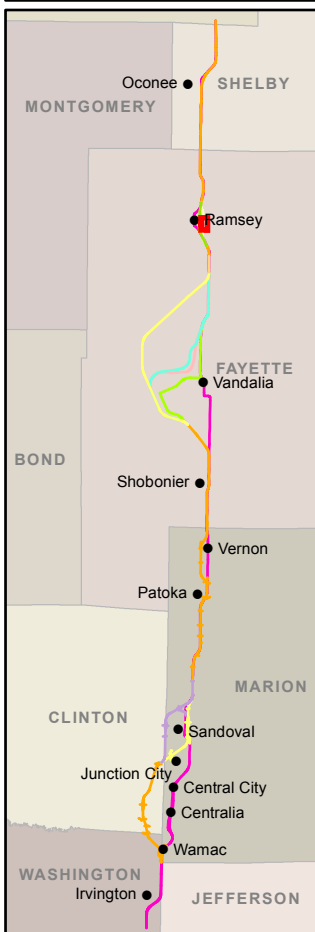
Sources:
 Illinois Department of Natural Resources, Illinois Natural History Survey, U.S. Geological Survey
 Data to be used for reference only



SHEET 167 OF 185
**ENVIRONMENTAL
 RESOURCES**



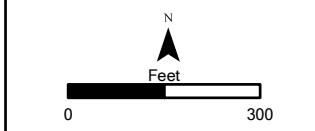
Aerial Background Copyright: © 2012 Esri, DeLorme, NAVTEQ, TomTom
 Source: Esri, DigitalGlobe, GeoEye, i-cubed, USDA, USGS, AEX, Getmapping, Aerogrid, IGN, IGP, swisstopo, and the GIS User Community



Legend

- Existing U.S. 51
- U.S. 51 Build Alternative
- CS Alt 1
- CS Alt 2
- V Alt 1
- V Alt 2
- V Alt 3
- V Alt 4
- Ramsey Creek Option A
- Ramsey Creek Option B
- R Alt 1
- R Alt 2
- Alternative Centerline
- Alternative Right-of-Way
- Biologically Significant Stream
- Stream
- Centennial Farm
- Sesquicentennial Farm
- State Park
- INHS High Quality Wetland
- INHS Wetland
- INAI Site
- Uneconomic Remnant
- Important Use Area
- REC Site
- Floodplain
- County Boundary
- Municipality Boundary
- Grade Separation
- Noise Receptor
- Monitored Noise Receptor
- Quarry
- CERCLIS Site
- National Register Historic Site
- Access Closures
- Public Facility
- Major Employers
- Displacements**
- Residence
- Residential Outbuilding
- Farm Residence
- Farm Outbuilding
- Farm Business
- Farm Business Outbuilding
- Business
- Access Impacts**
- Residence
- Residential Outbuilding
- Farm Residence
- Farm Outbuilding
- Farm Business
- Farm Business Outbuilding
- Public Facility

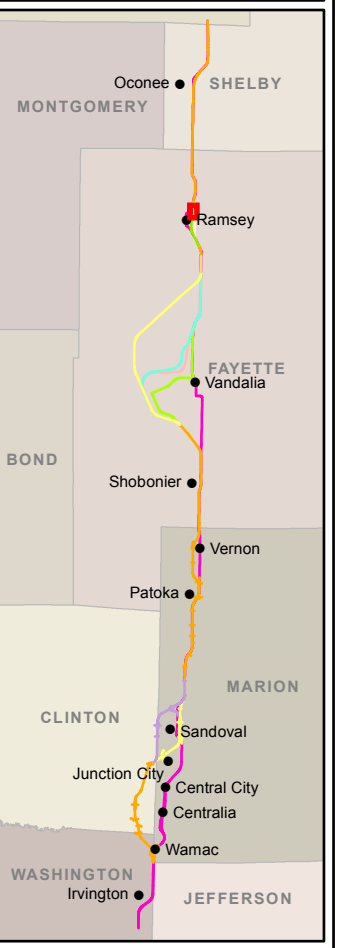
Sources:
 Illinois Department of Natural Resources, Illinois Natural History Survey, U.S. Geological Survey
 Data to be used for reference only



SHEET 168 OF 185
ENVIRONMENTAL RESOURCES



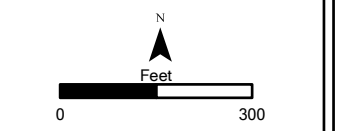
Aerial Background Copyright: © 2012 Esri, DeLorme, NAVTEQ, TomTom
 Source: Esri, DigitalGlobe, GeoEye, i-cubed, USDA, USGS, AEX, Getmapping, Aerogrid, IGN, IGP, swisstopo, and the GIS User Community



Legend

- Existing U.S. 51
- U.S. 51 Build Alternative
- CS Alt 1
- CS Alt 2
- V Alt 1
- V Alt 2
- V Alt 3
- V Alt 4
- Ramsey Creek Option A
- Ramsey Creek Option B
- R Alt 1
- R Alt 2
- Alternative Centerline
- Alternative Right-of-Way
- Biologically Significant Stream
- Stream
- Centennial Farm
- Sesquicentennial Farm
- State Park
- INHS High Quality Wetland
- INHS Wetland
- INAI Site
- Uneconomic Remnant
- Important Use Area
- REC Site
- Floodplain
- County Boundary
- Municipality Boundary
- Grade Separation
- Noise Receptor
- Monitored Noise Receptor
- Quarry
- CERCLIS Site
- National Register Historic Site
- Access Closures
- Public Facility
- Major Employers
- Displacements**
- Residence
- Residential Outbuilding
- Farm Residence
- Farm Outbuilding
- Farm Business
- Farm Business Outbuilding
- Business
- Access Impacts**
- Residence
- Residential Outbuilding
- Farm Residence
- Farm Outbuilding
- Farm Business
- Farm Business Outbuilding
- Public Facility

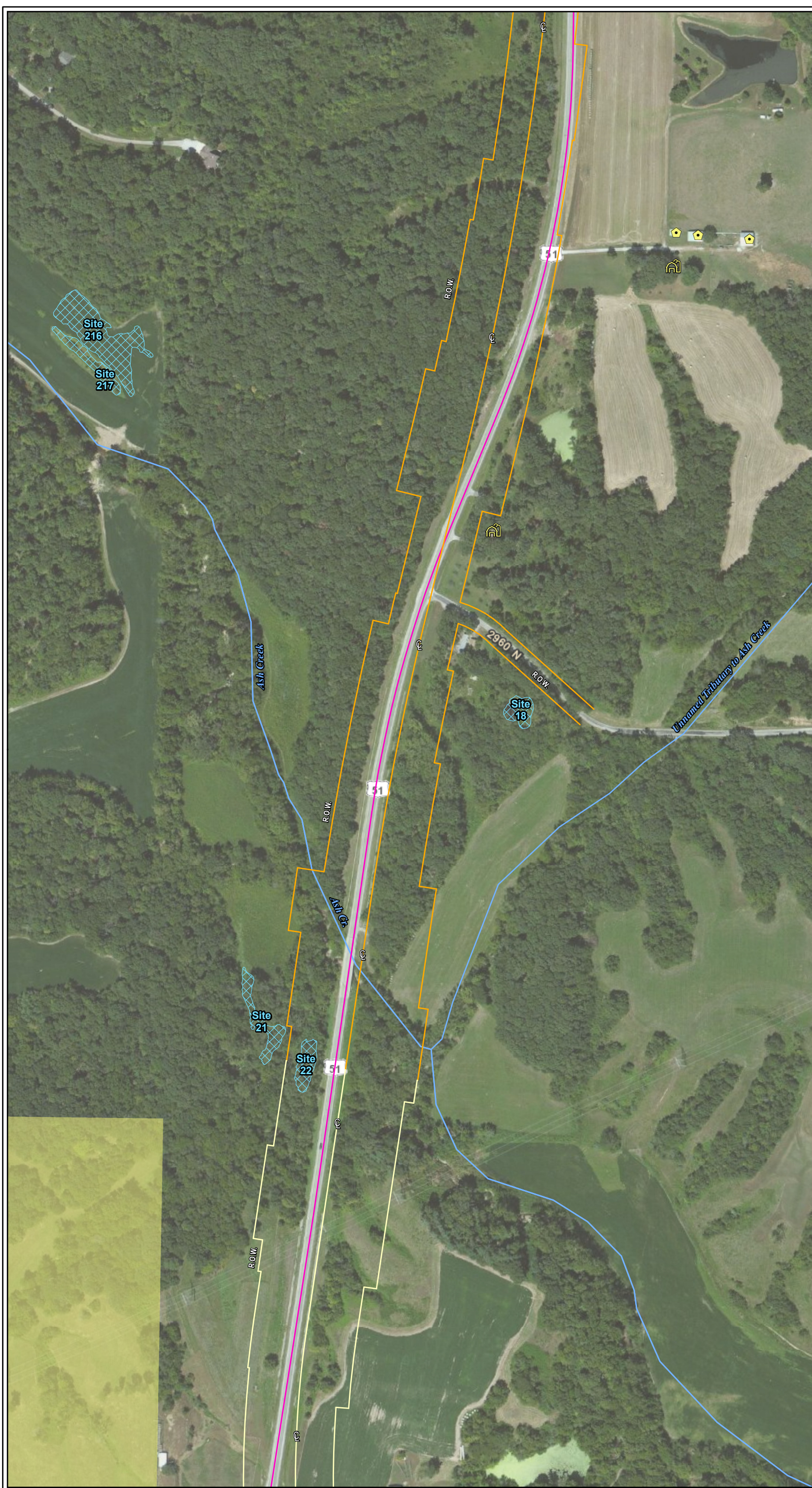
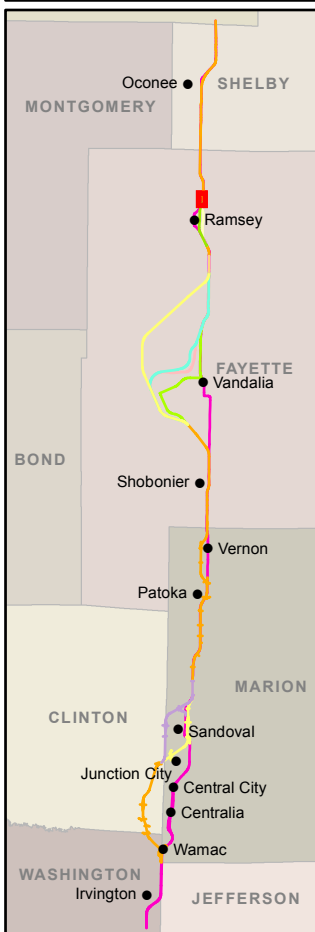
Sources:
 Illinois Department of Natural Resources, Illinois Natural History Survey, U.S. Geological Survey
 Data to be used for reference only



SHEET 169 OF 185
ENVIRONMENTAL RESOURCES

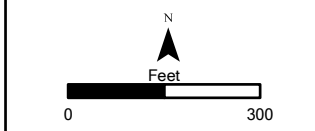


Aerial Background Copyright: © 2012 Esri, DeLorme, NAVTEQ, TomTom
 Source: Esri, DigitalGlobe, GeoEye, i-cubed, USDA, USGS, AEX, Getmapping, Aerogrid, IGN, IGP, swisstopo, and the GIS User Community



- Legend**
- Existing U.S. 51
 - U.S. 51 Build Alternative
 - CS Alt 1
 - CS Alt 2
 - V Alt 1
 - V Alt 2
 - V Alt 3
 - V Alt 4
 - Ramsey Creek Option A
 - Ramsey Creek Option B
 - R Alt 1
 - R Alt 2
 - Alternative Centerline
 - Alternative Right-of-Way
 - Biologically Significant Stream
 - Stream
 - Centennial Farm
 - Sesquicentennial Farm
 - State Park
 - INHS High Quality Wetland
 - INHS Wetland
 - INAI Site
 - Uneconomic Remnant
 - Important Use Area
 - REC Site
 - Floodplain
 - County Boundary
 - Municipality Boundary
 - Grade Separation
 - Noise Receptor
 - Monitored Noise Receptor
 - Quarry
 - CERCLIS Site
 - National Register Historic Site
 - Access Closures
 - Public Facility
 - Major Employers
 - Displacements
 - Residence
 - Residential Outbuilding
 - Farm Residence
 - Farm Outbuilding
 - Farm Business
 - Farm Business Outbuilding
 - Business
 - Access Impacts
 - Residence
 - Residential Outbuilding
 - Farm Residence
 - Farm Outbuilding
 - Farm Business
 - Farm Business Outbuilding
 - Public Facility

Sources:
 Illinois Department of Natural Resources, Illinois Natural History Survey, U.S. Geological Survey
 Data to be used for reference only



SHEET 170 OF 185
ENVIRONMENTAL RESOURCES

Aerial Background Copyright: © 2012 Esri, DeLorme, NAVTEQ, TomTom
 Source: Esri, DigitalGlobe, GeoEye, i-cubed, USDA, USGS, AEX, Getmapping, Aerogrid, IGN, IGP, swisstopo, and the GIS User Community