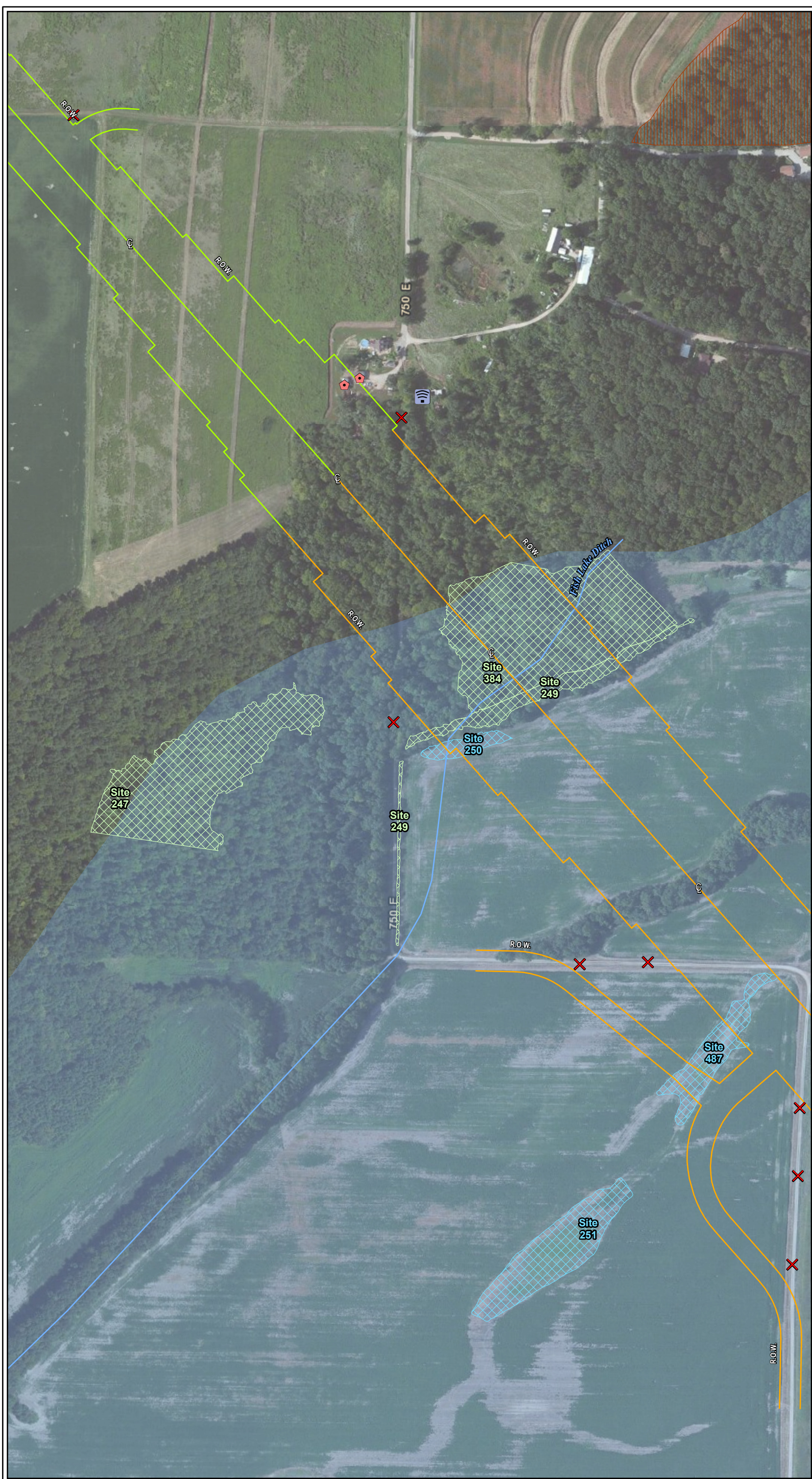


- Legend**
- Existing U.S. 51
 - U.S. 51 Build Alternative
 - CS Alt 1
 - CS Alt 2
 - V Alt 1
 - V Alt 2
 - V Alt 3
 - V Alt 4
 - Ramsey Creek Option A
 - Ramsey Creek Option B
 - R Alt 1
 - R Alt 2
 - Alternative Centerline
 - Alternative Right-of-Way
 - Biologically Significant Stream
 - Stream
 - Centennial Farm
 - Sesquicentennial Farm
 - State Park
 - INHS High Quality Wetland
 - INHS Wetland
 - INAI Site
 - Uneconomic Remnant
 - Important Use Area
 - REC Site
 - Floodplain
 - County Boundary
 - Municipality Boundary
 - Grade Separation
 - Noise Receptor
 - Monitored Noise Receptor
 - Quarry
 - CERCLIS Site
 - National Register Historic Site
 - Access Closures
 - Public Facility
 - Major Employers
 - Displacements**
 - Residence
 - Residential Outbuilding
 - Farm Residence
 - Farm Outbuilding
 - Farm Business
 - Farm Business Outbuilding
 - Business
 - Access Impacts**
 - Residence
 - Residential Outbuilding
 - Farm Residence
 - Farm Outbuilding
 - Farm Business
 - Farm Business Outbuilding
 - Public Facility

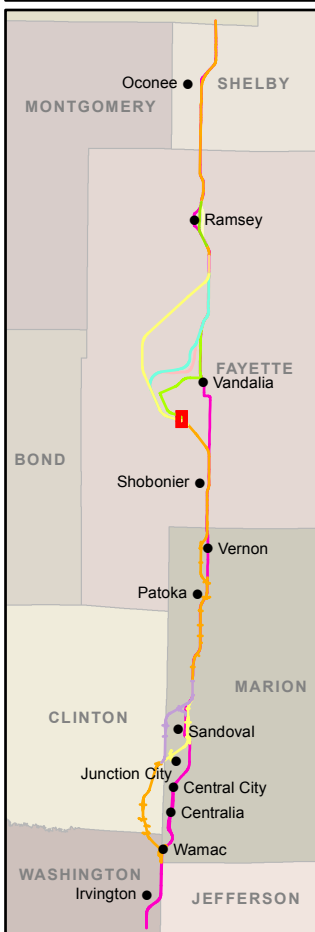
Sources:
 Illinois Department of Natural Resources, Illinois
 Natural History Survey, U.S. Geological Survey
 Data to be used for reference only



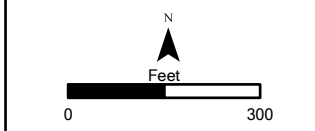
SHEET 131 OF 185
**ENVIRONMENTAL
 RESOURCES**



Aerial Background Copyright: © 2012 Esri, DeLorme, NAVTEQ, TomTom
 Source: Esri, DigitalGlobe, GeoEye, i-cubed, USDA, USGS, AEX, Getmapping, Aerogrid, IGN, IGP, swisstopo, and the GIS User Community



- Legend**
- Existing U.S. 51
 - U.S. 51 Build Alternative
 - CS Alt 1
 - CS Alt 2
 - V Alt 1
 - V Alt 2
 - V Alt 3
 - V Alt 4
 - Ramsey Creek Option A
 - Ramsey Creek Option B
 - R Alt 1
 - R Alt 2
 - Ⓢ Alternative Centerline
 - Alternative Right-of-Way
 - Biologically Significant Stream
 - Stream
 - Centennial Farm
 - Sesquicentennial Farm
 - State Park
 - INHS High Quality Wetland
 - INHS Wetland
 - INAI Site
 - Uneconomic Remnant
 - Important Use Area
 - REC Site
 - Floodplain
 - County Boundary
 - Municipality Boundary
 - Ⓢ Grade Separation
 - Ⓢ Noise Receptor
 - Ⓢ Monitored Noise Receptor
 - Ⓢ Quarry
 - Ⓢ CERCLIS Site
 - Ⓢ National Register Historic Site
 - X Access Closures
 - Ⓢ Public Facility
 - Ⓢ Major Employers
 - Displacements**
 - Ⓢ Residence
 - Ⓢ Residential Outbuilding
 - Ⓢ Farm Residence
 - Ⓢ Farm Outbuilding
 - Ⓢ Farm Business
 - Ⓢ Farm Business Outbuilding
 - Ⓢ Business
 - Access Impacts**
 - Ⓢ Residence
 - Ⓢ Residential Outbuilding
 - Ⓢ Farm Residence
 - Ⓢ Farm Outbuilding
 - Ⓢ Farm Business
 - Ⓢ Farm Business Outbuilding
 - Ⓢ Public Facility
- Sources:
 Illinois Department of Natural Resources, Illinois Natural History Survey, U.S. Geological Survey
 Data to be used for reference only

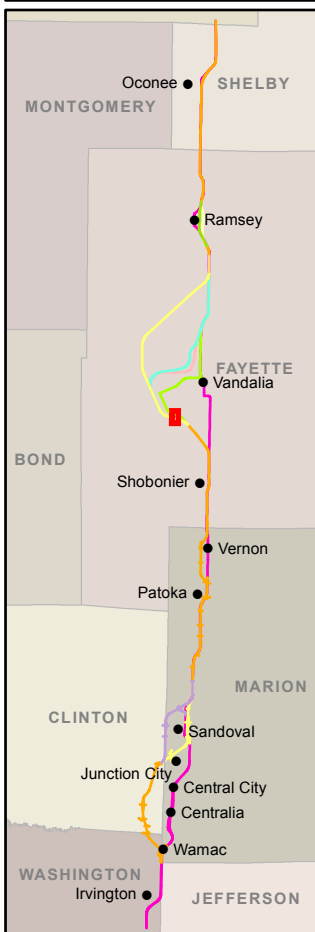


SHEET 132 OF 185

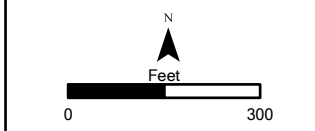
**ENVIRONMENTAL
RESOURCES**



Aerial Background Copyright: © 2012 Esri, DeLorme, NAVTEQ, TomTom
 Source: Esri, DigitalGlobe, GeoEye, i-cubed, USDA, USGS, AEX, Getmapping, Aerogrid, IGN, IGP, swisstopo, and the GIS User Community

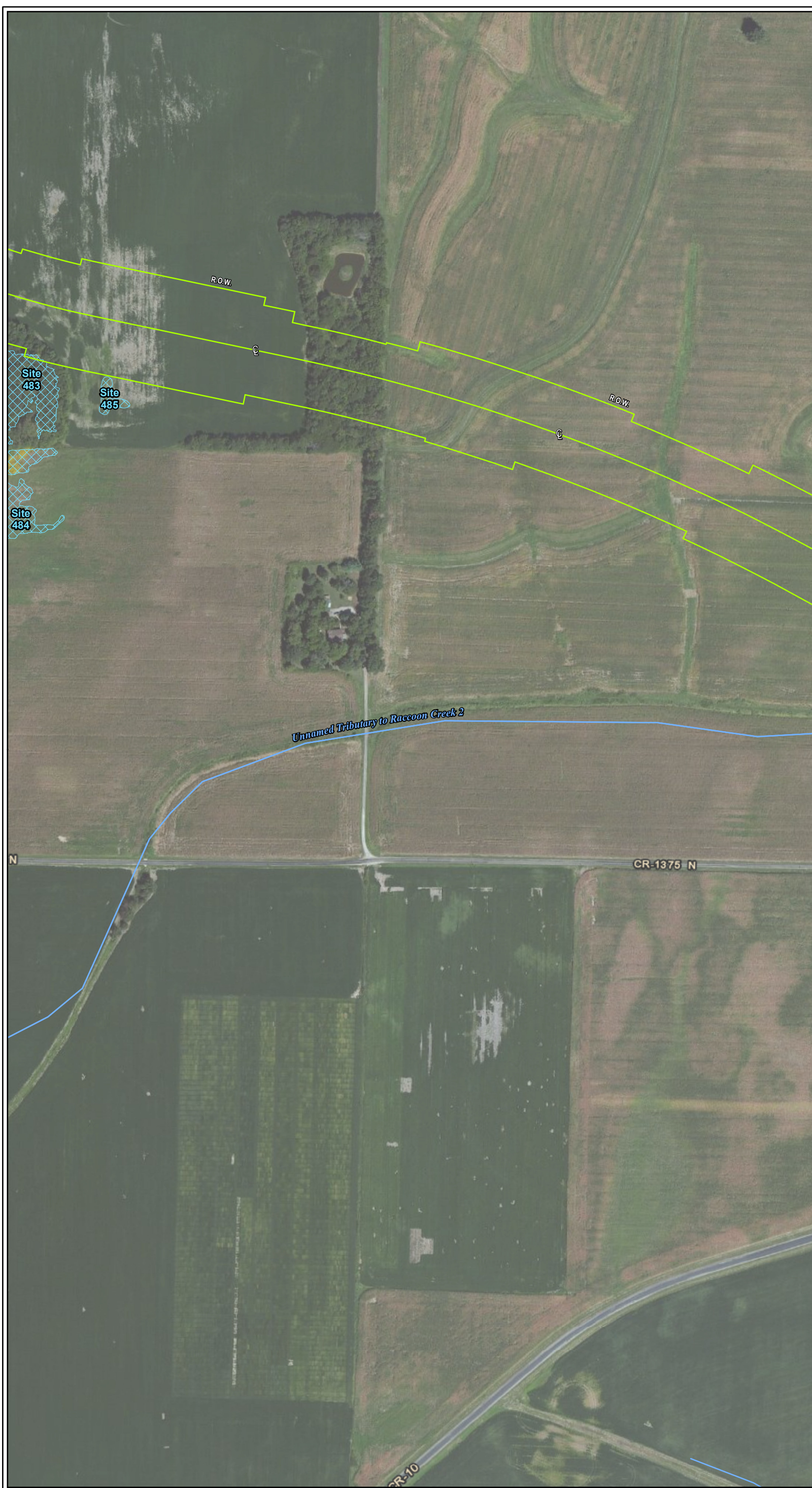


- Legend**
- Existing U.S. 51
 - U.S. 51 Build Alternative
 - CS Alt 1
 - CS Alt 2
 - V Alt 1
 - V Alt 2
 - V Alt 3
 - V Alt 4
 - Ramsey Creek Option A
 - Ramsey Creek Option B
 - R Alt 1
 - R Alt 2
 - Ⓢ Alternative Centerline
 - Alternative Right-of-Way
 - Biologically Significant Stream
 - Stream
 - Centennial Farm
 - Sesquicentennial Farm
 - State Park
 - INHS High Quality Wetland
 - INHS Wetland
 - INAI Site
 - Uneconomic Remnant
 - Important Use Area
 - REC Site
 - Floodplain
 - County Boundary
 - Municipality Boundary
 - Grade Separation
 - Ⓜ Noise Receptor
 - Ⓜ Monitored Noise Receptor
 - Ⓜ Quarry
 - Ⓜ CERCLIS Site
 - Ⓜ National Register Historic Site
 - ✕ Access Closures
 - Ⓜ Public Facility
 - Ⓜ Major Employers
 - Displacements**
 - Ⓜ Residence
 - Ⓜ Residential Outbuilding
 - Ⓜ Farm Residence
 - Ⓜ Farm Outbuilding
 - Ⓜ Farm Business
 - Ⓜ Farm Business Outbuilding
 - Ⓜ Business
 - Access Impacts**
 - Ⓜ Residence
 - Ⓜ Residential Outbuilding
 - Ⓜ Farm Residence
 - Ⓜ Farm Outbuilding
 - Ⓜ Farm Business
 - Ⓜ Farm Business Outbuilding
 - Ⓜ Public Facility
- Sources:
 Illinois Department of Natural Resources, Illinois Natural History Survey, U.S. Geological Survey
 Data to be used for reference only

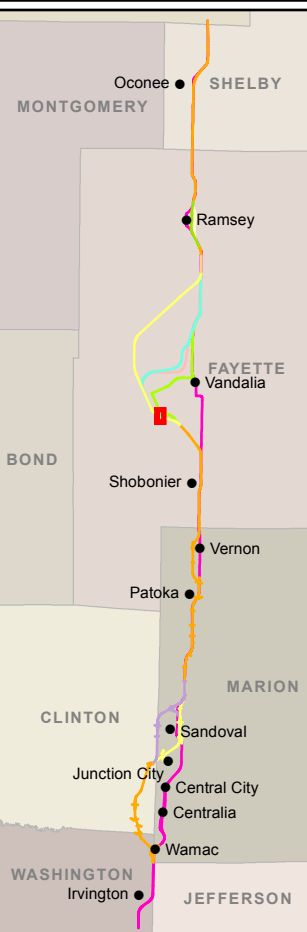


SHEET 133 OF 185

**ENVIRONMENTAL
RESOURCES**

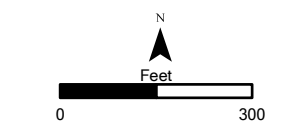


Aerial Background Copyright: © 2012 Esri, DeLorme, NAVTEQ, TomTom
 Source: Esri, DigitalGlobe, GeoEye, I-cubed, USDA, USGS, AEX, Getmapping, Aerogrid, IGN, IGP, swisstopo, and the GIS User Community



- Legend**
- Existing U.S. 51
 - U.S. 51 Build Alternative
 - CS Alt 1
 - CS Alt 2
 - V Alt 1
 - V Alt 2
 - V Alt 3
 - V Alt 4
 - Ramsey Creek Option A
 - Ramsey Creek Option B
 - R Alt 1
 - R Alt 2
 - Alternative Centerline
 - Alternative Right-of-Way
 - Biologically Significant Stream
 - Stream
 - Centennial Farm
 - Sesquicentennial Farm
 - State Park
 - INHS High Quality Wetland
 - INHS Wetland
 - INAI Site
 - Uneconomic Remnant
 - Important Use Area
 - REC Site
 - Floodplain
 - County Boundary
 - Municipality Boundary
 - Grade Separation
 - Noise Receptor
 - Monitored Noise Receptor
 - Quarry
 - CERCLIS Site
 - National Register Historic Site
 - Access Closures
 - Public Facility
 - Major Employers
 - Displacements**
 - Residence
 - Residential Outbuilding
 - Farm Residence
 - Farm Outbuilding
 - Farm Business
 - Farm Business Outbuilding
 - Business
 - Access Impacts**
 - Residence
 - Residential Outbuilding
 - Farm Residence
 - Farm Outbuilding
 - Farm Business
 - Farm Business Outbuilding
 - Public Facility

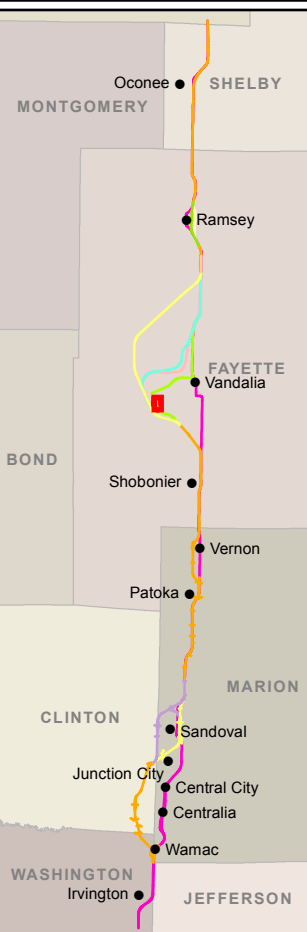
Sources:
 Illinois Department of Natural Resources, Illinois
 Natural History Survey, U.S. Geological Survey
 Data to be used for reference only



SHEET 134 OF 185
**ENVIRONMENTAL
 RESOURCES**

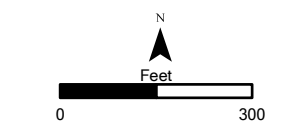


Aerial Background Copyright: © 2012 Esri, DeLorme, NAVTEQ, TomTom
 Source: Esri, DigitalGlobe, GeoEye, i-cubed, USDA, USGS, AEX, Getmapping, Aerogrid, IGN, IGP, swisstopo, and the GIS User Community



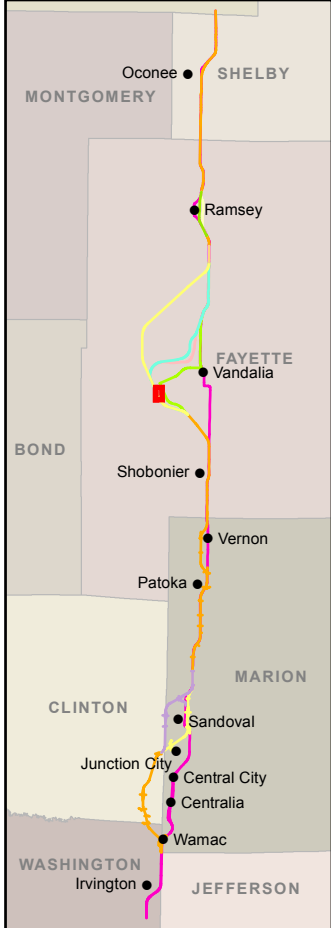
- Legend**
- Existing U.S. 51
 - U.S. 51 Build Alternative
 - CS Alt 1
 - CS Alt 2
 - V Alt 1
 - V Alt 2
 - V Alt 3
 - V Alt 4
 - Ramsey Creek Option A
 - Ramsey Creek Option B
 - R Alt 1
 - R Alt 2
 - Alternative Centerline
 - Alternative Right-of-Way
 - Biologically Significant Stream
 - Stream
 - Centennial Farm
 - Sesquicentennial Farm
 - State Park
 - INHS High Quality Wetland
 - INHS Wetland
 - INAI Site
 - Uneconomic Remnant
 - Important Use Area
 - REC Site
 - Floodplain
 - County Boundary
 - Municipality Boundary
 - Grade Separation
 - Noise Receptor
 - Monitored Noise Receptor
 - Quarry
 - CERCLIS Site
 - National Register Historic Site
 - Access Closures
 - Public Facility
 - Major Employers
 - Displacements**
 - Residence
 - Residential Outbuilding
 - Farm Residence
 - Farm Outbuilding
 - Farm Business
 - Farm Business Outbuilding
 - Business
 - Access Impacts**
 - Residence
 - Residential Outbuilding
 - Farm Residence
 - Farm Outbuilding
 - Farm Business
 - Farm Business Outbuilding
 - Public Facility

Sources:
 Illinois Department of Natural Resources, Illinois
 Natural History Survey, U.S. Geological Survey
 Data to be used for reference only



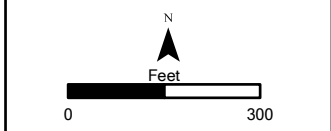
SHEET 135 OF 185
**ENVIRONMENTAL
 RESOURCES**



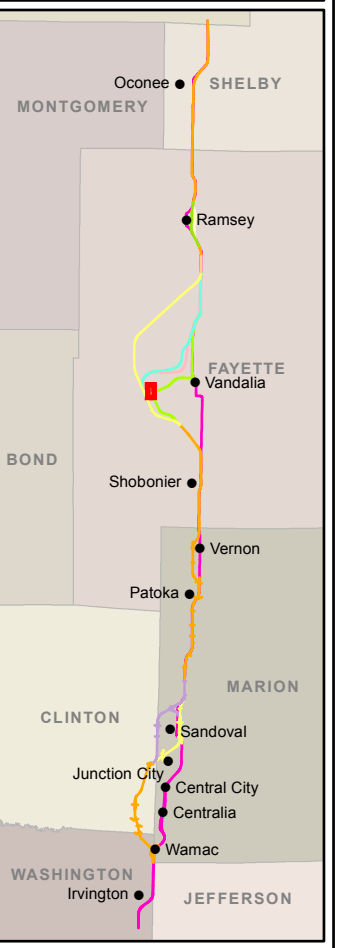


- Legend**
- Existing U.S. 51
 - U.S. 51 Build Alternative
 - CS Alt 1
 - CS Alt 2
 - V Alt 1
 - V Alt 2
 - V Alt 3
 - V Alt 4
 - Ramsey Creek Option A
 - Ramsey Creek Option B
 - R Alt 1
 - R Alt 2
 - Alternative Centerline
 - Alternative Right-of-Way
 - Biologically Significant Stream
 - Stream
 - Centennial Farm
 - Sesquicentennial Farm
 - State Park
 - INHS High Quality Wetland
 - INHS Wetland
 - INAI Site
 - Uneconomic Remnant
 - Important Use Area
 - REC Site
 - Floodplain
 - County Boundary
 - Municipality Boundary
 - Grade Separation
 - Noise Receptor
 - Monitored Noise Receptor
 - Quarry
 - CERCLIS Site
 - National Register Historic Site
 - Access Closures
 - Public Facility
 - Major Employers
 - Displacements**
 - Residence
 - Residential Outbuilding
 - Farm Residence
 - Farm Outbuilding
 - Farm Business
 - Farm Business Outbuilding
 - Business
 - Access Impacts**
 - Residence
 - Residential Outbuilding
 - Farm Residence
 - Farm Outbuilding
 - Farm Business
 - Farm Business Outbuilding
 - Public Facility

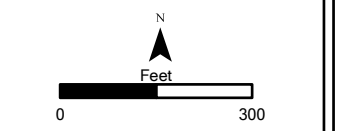
Sources:
 Illinois Department of Natural Resources, Illinois
 Natural History Survey, U.S. Geological Survey
 Data to be used for reference only



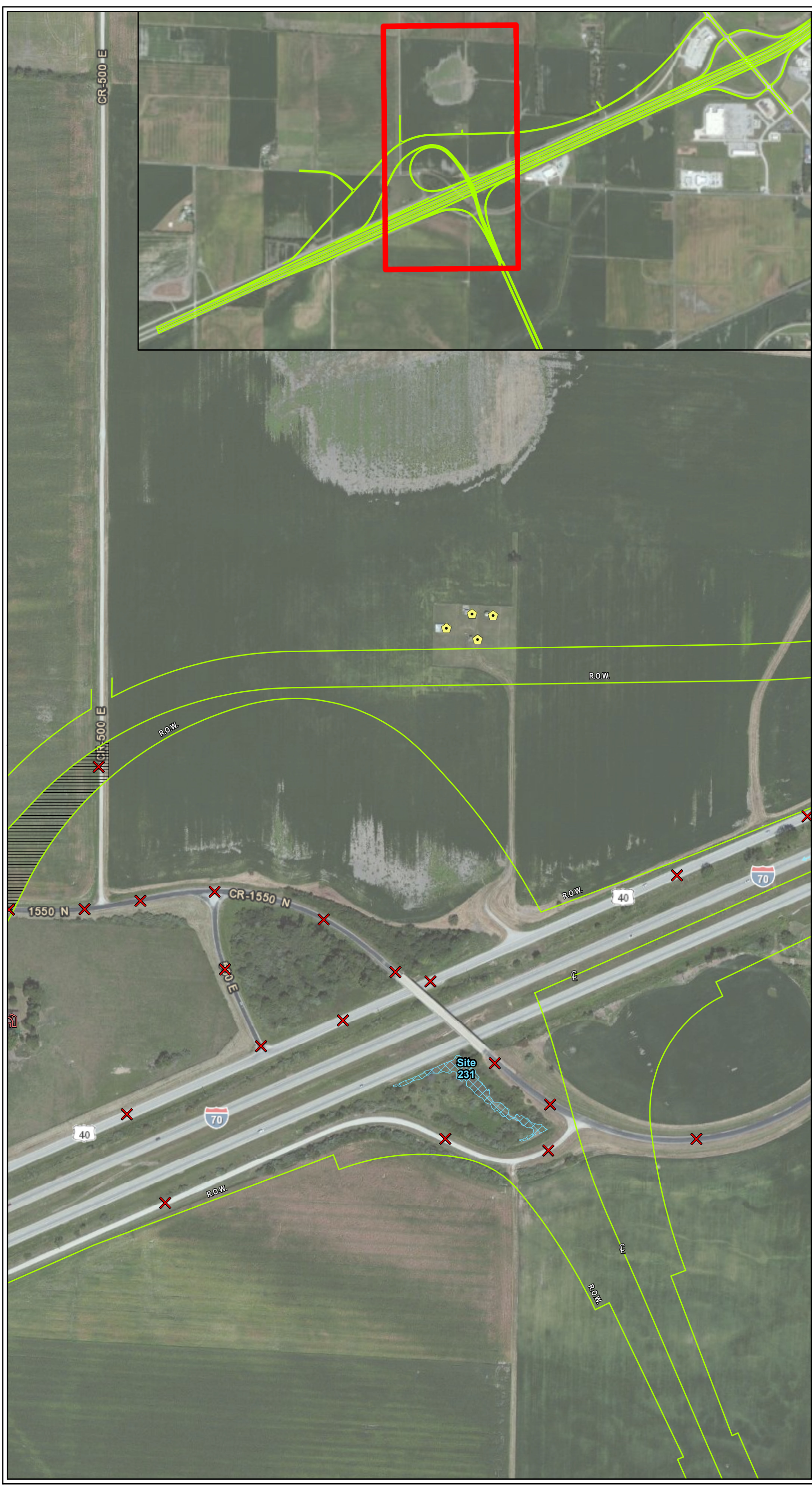
Aerial Background Copyright: © 2012 Esri, DeLorme, NAVTEQ, TomTom
 Source: Esri, DigitalGlobe, GeoEye, i-cubed, USDA, USGS, AEX, Getmapping, Aerogrid, IGN, IGP, swisstopo, and the GIS User Community



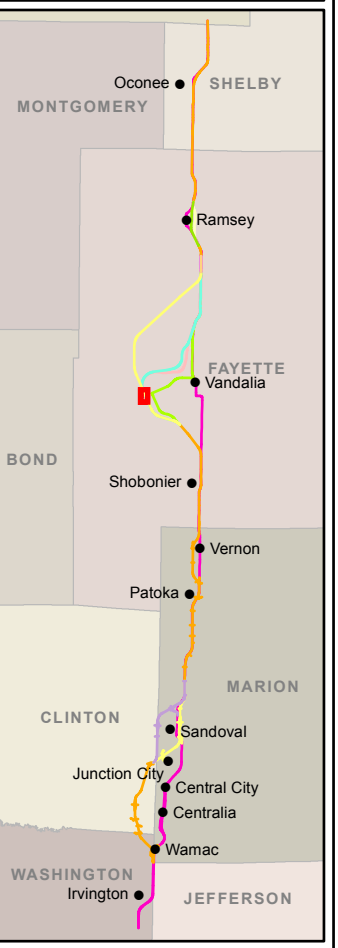
- Legend**
- Existing U.S. 51
 - U.S. 51 Build Alternative
 - CS Alt 1
 - CS Alt 2
 - V Alt 1
 - V Alt 2
 - V Alt 3
 - V Alt 4
 - Ramsey Creek Option A
 - Ramsey Creek Option B
 - R Alt 1
 - R Alt 2
 - Alternative Centerline
 - Alternative Right-of-Way
 - Biologically Significant Stream
 - Stream
 - Centennial Farm
 - Sesqui-centennial Farm
 - State Park
 - INHS High Quality Wetland
 - INHS Wetland
 - INAI Site
 - Uneconomic Remnant
 - Important Use Area
 - REC Site
 - Floodplain
 - County Boundary
 - Municipality Boundary
 - Grade Separation
 - Noise Receptor
 - Monitored Noise Receptor
 - Quarry
 - CERCLIS Site
 - National Register Historic Site
 - Access Closures
 - Public Facility
 - Major Employers
 - Displacements**
 - Residence
 - Residential Outbuilding
 - Farm Residence
 - Farm Outbuilding
 - Farm Business
 - Farm Business Outbuilding
 - Business
 - Access Impacts**
 - Residence
 - Residential Outbuilding
 - Farm Residence
 - Farm Outbuilding
 - Farm Business
 - Farm Business Outbuilding
 - Public Facility
- Sources:
 Illinois Department of Natural Resources, Illinois Natural History Survey, U.S. Geological Survey
 Data to be used for reference only



SHEET 137 OF 185
ENVIRONMENTAL RESOURCES



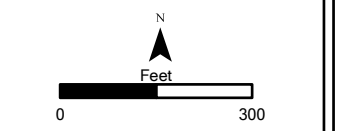
Aerial Background Copyright: © 2012 Esri, DeLorme, NAVTEQ, TomTom
 Source: Esri, DigitalGlobe, GeoEye, i-cubed, USDA, USGS, AEX, Getmapping, Aerogrid, IGN, IGP, swisstopo, and the GIS User Community



Legend

- Existing U.S. 51
- U.S. 51 Build Alternative
- CS Alt 1
- CS Alt 2
- V Alt 1
- V Alt 2
- V Alt 3
- V Alt 4
- Ramsey Creek Option A
- Ramsey Creek Option B
- R Alt 1
- R Alt 2
- Alternative Centerline
- Alternative Right-of-Way
- Biologically Significant Stream
- Stream
- Centennial Farm
- Sesquicentennial Farm
- State Park
- INHS High Quality Wetland
- INHS Wetland
- INAI Site
- Uneconomic Remnant
- Important Use Area
- REC Site
- Floodplain
- County Boundary
- Municipality Boundary
- Grade Separation
- Noise Receptor
- Monitored Noise Receptor
- Quarry
- CERCLIS Site
- National Register Historic Site
- Access Closures
- Public Facility
- Major Employers
- Displacements**
- Residence
- Residential Outbuilding
- Farm Residence
- Farm Outbuilding
- Farm Business
- Farm Business Outbuilding
- Business
- Access Impacts**
- Residence
- Residential Outbuilding
- Farm Residence
- Farm Outbuilding
- Farm Business
- Farm Business Outbuilding
- Public Facility

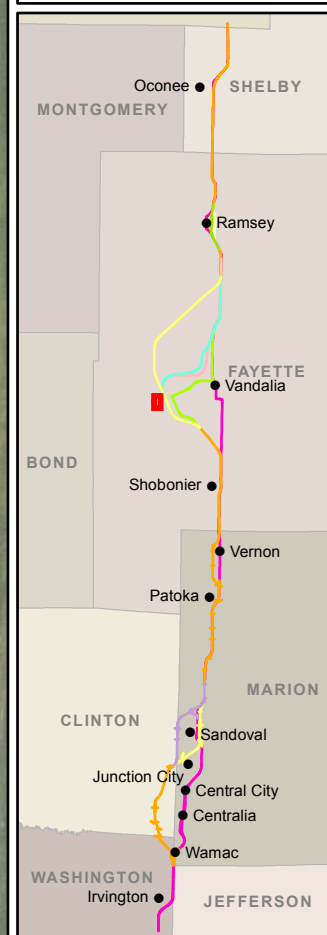
Sources:
 Illinois Department of Natural Resources, Illinois Natural History Survey, U.S. Geological Survey
 Data to be used for reference only



SHEET 138 OF 185
ENVIRONMENTAL RESOURCES



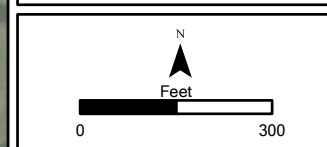
Aerial Background Copyright: © 2012 Esri, DeLorme, NAVTEQ, TomTom
 Source: Esri, DigitalGlobe, GeoEye, i-cubed, USDA, USGS, AEX, Getmapping, Aerogrid, IGN, IGP, swisstopo, and the GIS User Community



Legend

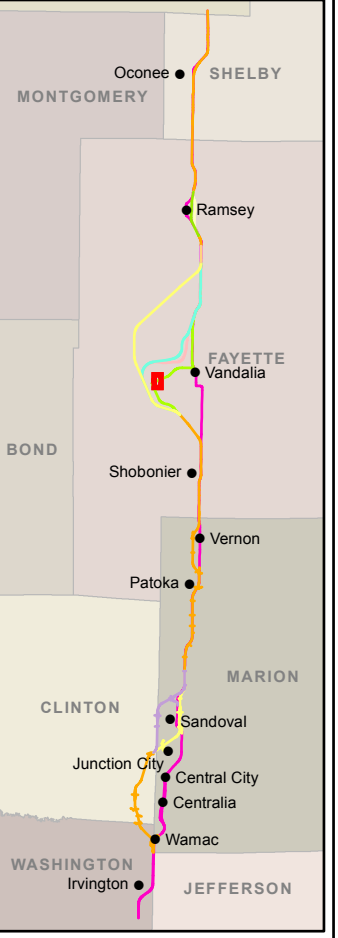
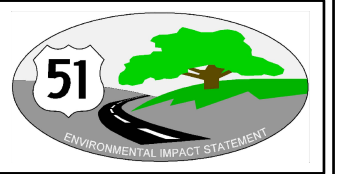
- Existing U.S. 51
- U.S. 51 Build Alternative
- CS Alt 1
- CS Alt 2
- V Alt 1
- V Alt 2
- V Alt 3
- V Alt 4
- Ramsey Creek Option A
- Ramsey Creek Option B
- R Alt 1
- R Alt 2
- Alternative Centerline
- Alternative Right-of-Way
- Biologically Significant Stream
- Stream
- Centennial Farm
- Sesquicentennial Farm
- State Park
- INHS High Quality Wetland
- INHS Wetland
- INAI Site
- Uneconomic Remnant
- Important Use Area
- REC Site
- Floodplain
- County Boundary
- Municipality Boundary
- Grade Separation
- Noise Receptor
- Monitored Noise Receptor
- Quarry
- CERCLIS Site
- National Register Historic Site
- Access Closures
- Public Facility
- Major Employers
- Displacements**
- Residence
- Residential Outbuilding
- Farm Residence
- Farm Outbuilding
- Farm Business
- Farm Business Outbuilding
- Business
- Access Impacts**
- Residence
- Residential Outbuilding
- Farm Residence
- Farm Outbuilding
- Farm Business
- Farm Business Outbuilding
- Public Facility

Sources:
 Illinois Department of Natural Resources, Illinois Natural History Survey, U.S. Geological Survey
 Data to be used for reference only

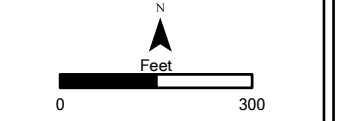


SHEET 139 OF 185

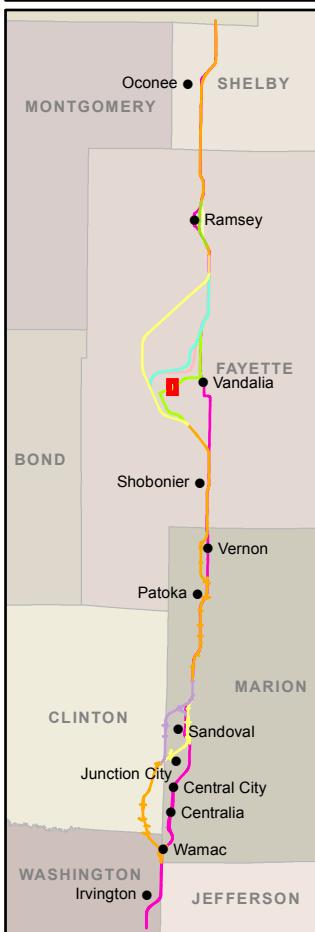
**ENVIRONMENTAL
RESOURCES**



- Legend**
- Existing U.S. 51
 - U.S. 51 Build Alternative
 - - - CS Alt 1
 - - - CS Alt 2
 - - - V Alt 1
 - - - V Alt 2
 - - - V Alt 3
 - - - V Alt 4
 - - - Ramsey Creek Option A
 - - - Ramsey Creek Option B
 - - - R Alt 1
 - - - R Alt 2
 - Ⓢ Alternative Centerline
 - - - Alternative Right-of-Way
 - Biologically Significant Stream
 - Stream
 - Centennial Farm
 - Sesquicentennial Farm
 - State Park
 - INHS High Quality Wetland
 - INHS Wetland
 - INAI Site
 - Uneconomic Remnant
 - Important Use Area
 - REC Site
 - Floodplain
 - County Boundary
 - Municipality Boundary
 - Grade Separation
 - 📶 Noise Receptor
 - 📶 Monitored Noise Receptor
 - ⚡ Quarry
 - ★ CERCLIS Site
 - 🏠 National Register Historic Site
 - X Access Closures
 - 🏠 Public Facility
 - 🏠 Major Employers
 - Displacements**
 - 🏠 Residence
 - 🏠 Residential Outbuilding
 - 🏠 Farm Residence
 - 🏠 Farm Outbuilding
 - 🏠 Farm Business
 - 🏠 Farm Business Outbuilding
 - 🏠 Business
 - Access Impacts**
 - 🏠 Residence
 - 🏠 Residential Outbuilding
 - 🏠 Farm Residence
 - 🏠 Farm Outbuilding
 - 🏠 Farm Business
 - 🏠 Farm Business Outbuilding
 - 🏠 Public Facility
- Sources:
 Illinois Department of Natural Resources, Illinois Natural History Survey, U.S. Geological Survey
 Data to be used for reference only



Aerial Background Copyright: © 2012 Esri, DeLorme, NAVTEQ, TomTom
 Source: Esri, DigitalGlobe, GeoEye, I-cubed, USDA, USGS, AEX, Getmapping, Aerogrid, IGN, IGP, swisstopo, and the GIS User Community



- Legend**
- Existing U.S. 51
 - U.S. 51 Build Alternative
 - CS Alt 1
 - CS Alt 2
 - V Alt 1
 - V Alt 2
 - V Alt 3
 - V Alt 4
 - Ramsey Creek Option A
 - Ramsey Creek Option B
 - R Alt 1
 - R Alt 2
 - Alternative Centerline
 - Alternative Right-of-Way
 - Biologically Significant Stream
 - Stream
 - Centennial Farm
 - Sesquicentennial Farm
 - State Park
 - INHS High Quality Wetland
 - INHS Wetland
 - INAI Site
 - Uneconomic Remnant
 - Important Use Area
 - REC Site
 - Floodplain
 - County Boundary
 - Municipality Boundary
 - Grade Separation
 - Noise Receptor
 - Monitored Noise Receptor
 - Quarry
 - CERCLIS Site
 - National Register Historic Site
 - Access Closures
 - Public Facility
 - Major Employers
 - Displacements**
 - Residence
 - Residential Outbuilding
 - Farm Residence
 - Farm Outbuilding
 - Farm Business
 - Farm Business Outbuilding
 - Business
 - Access Impacts**
 - Residence
 - Residential Outbuilding
 - Farm Residence
 - Farm Outbuilding
 - Farm Business
 - Farm Business Outbuilding
 - Public Facility

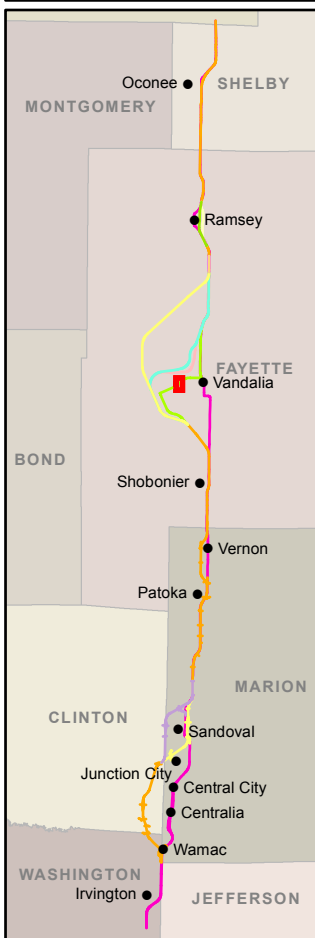
Sources:
 Illinois Department of Natural Resources, Illinois Natural History Survey, U.S. Geological Survey
 Data to be used for reference only



SHEET 141 OF 185
ENVIRONMENTAL RESOURCES



Aerial Background Copyright: © 2012 Esri, DeLorme, NAVTEQ, TomTom
 Source: Esri, DigitalGlobe, GeoEye, i-cubed, USDA, USGS, AEX, Getmapping, Aerogrid, IGN, IGP, swisstopo, and the GIS User Community



- Legend**
- Existing U.S. 51
 - U.S. 51 Build Alternative
 - CS Alt 1
 - CS Alt 2
 - V Alt 1
 - V Alt 2
 - V Alt 3
 - V Alt 4
 - Ramsey Creek Option A
 - Ramsey Creek Option B
 - R Alt 1
 - R Alt 2
 - Ⓢ Alternative Centerline
 - Ⓢ Alternative Right-of-Way
 - Biologically Significant Stream
 - Stream
 - ▭ Centennial Farm
 - ▭ Sesquicentennial Farm
 - ▭ State Park
 - ▭ INHS High Quality Wetland
 - ▭ INHS Wetland
 - ▭ INAI Site
 - ▭ Uneconomic Remnant
 - ▭ Important Use Area
 - ▭ REC Site
 - ▭ Floodplain
 - ▭ County Boundary
 - ▭ Municipality Boundary
 - ▭ Grade Separation
 - Ⓢ Noise Receptor
 - Ⓢ Monitored Noise Receptor
 - Ⓢ Quarry
 - Ⓢ CERCLIS Site
 - Ⓢ National Register Historic Site
 - Ⓢ Access Closures
 - Ⓢ Public Facility
 - Ⓢ Major Employers
 - Displacements**
 - Ⓢ Residence
 - Ⓢ Residential Outbuilding
 - Ⓢ Farm Residence
 - Ⓢ Farm Outbuilding
 - Ⓢ Farm Business
 - Ⓢ Farm Business Outbuilding
 - Ⓢ Business
 - Access Impacts**
 - Ⓢ Residence
 - Ⓢ Residential Outbuilding
 - Ⓢ Farm Residence
 - Ⓢ Farm Outbuilding
 - Ⓢ Farm Business
 - Ⓢ Farm Business Outbuilding
 - Ⓢ Public Facility

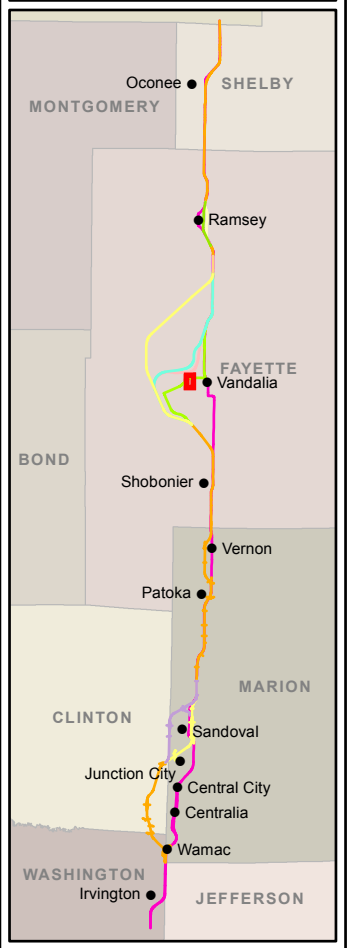
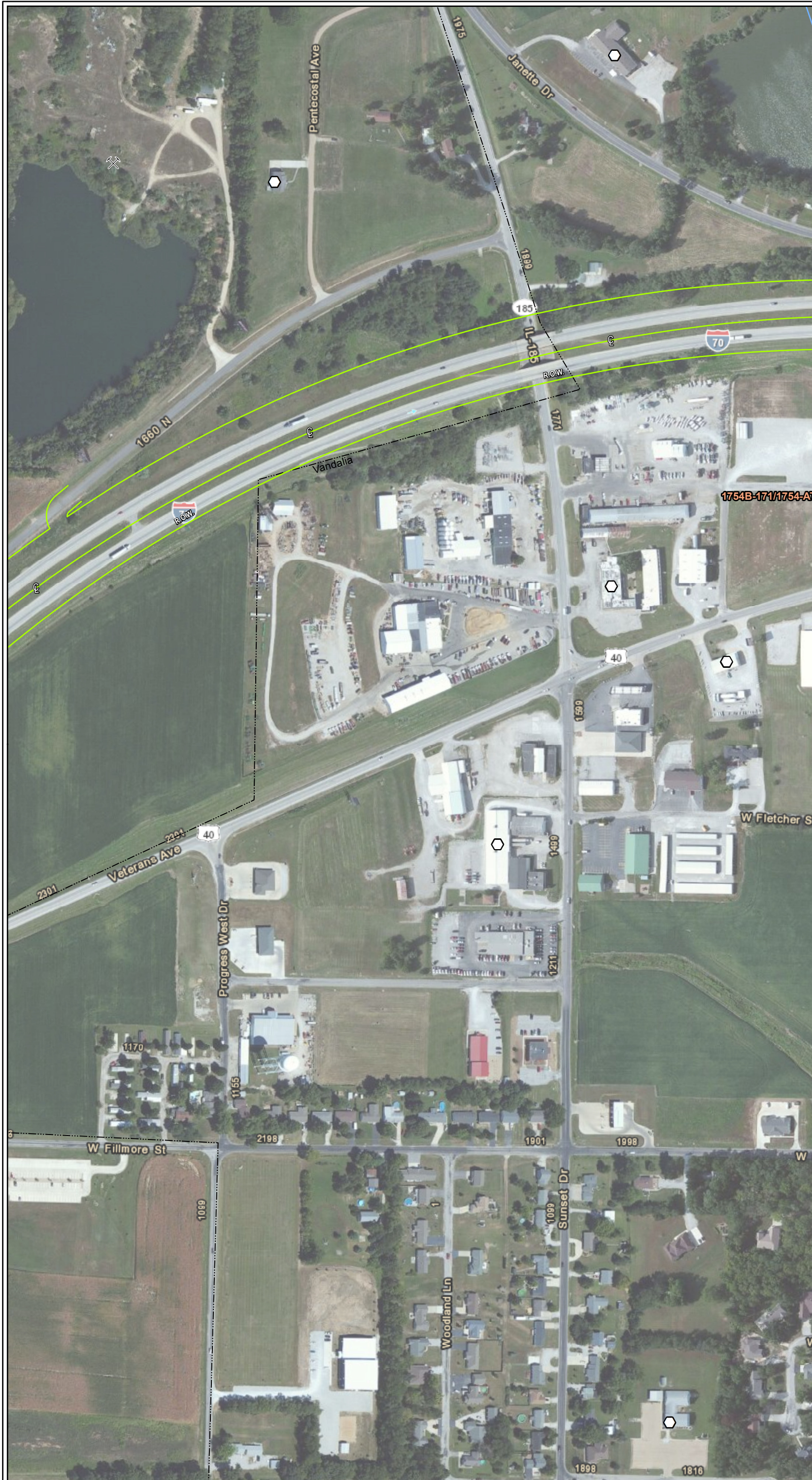
Sources:
 Illinois Department of Natural Resources, Illinois Natural History Survey, U.S. Geological Survey
 Data to be used for reference only



SHEET 142 OF 185
ENVIRONMENTAL RESOURCES



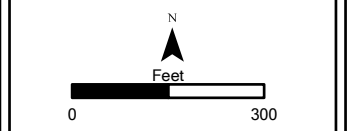
Aerial Background Copyright: © 2012 Esri, DeLorme, NAVTEQ, TomTom
 Source: Esri, DigitalGlobe, GeoEye, i-cubed, USDA, USGS, AEX, Getmapping, Aerogrid, IGN, IGP, swisstopo, and the GIS User Community



Legend

- Existing U.S. 51
- U.S. 51 Build Alternative
- CS Alt 1
- CS Alt 2
- V Alt 1
- V Alt 2
- V Alt 3
- V Alt 4
- Ramsey Creek Option A
- Ramsey Creek Option B
- R Alt 1
- R Alt 2
- ⊕ Alternative Centerline
- ⊕ Alternative Right-of-Way
- Biologically Significant Stream
- Stream
- ▭ Centennial Farm
- ▭ Sesquicentennial Farm
- ▭ State Park
- ▭ INHS High Quality Wetland
- ▭ INHS Wetland
- ▭ INAI Site
- ▭ Uneconomic Remnant
- ▭ Important Use Area
- ▭ REC Site
- ▭ Floodplain
- ▭ County Boundary
- ▭ Municipality Boundary
- ▭ Grade Separation
- ⊕ Noise Receptor
- ⊕ Monitored Noise Receptor
- ⊕ Quarry
- ⊕ CERCLIS Site
- ⊕ National Register Historic Site
- ✕ Access Closures
- ⊕ Public Facility
- ⊕ Major Employers
- Displacements**
- ⊕ Residence
- ⊕ Residential Outbuilding
- ⊕ Farm Residence
- ⊕ Farm Outbuilding
- ⊕ Farm Business
- ⊕ Farm Business Outbuilding
- ⊕ Business
- Access Impacts**
- ⊕ Residence
- ⊕ Residential Outbuilding
- ⊕ Farm Residence
- ⊕ Farm Outbuilding
- ⊕ Farm Business
- ⊕ Farm Business Outbuilding
- ⊕ Public Facility

Sources:
 Illinois Department of Natural Resources, Illinois
 Natural History Survey, U.S. Geological Survey
 Data to be used for reference only



SHEET 143 OF 185

**ENVIRONMENTAL
RESOURCES**

Aerial Background Copyright: © 2012 Esri, DeLorme, NAVTEQ, TomTom
 Source: Esri, DigitalGlobe, GeoEye, I-cubed, USDA, USGS, AEX, Getmapping, Aerogrid, IGN, IGP, swisstopo, and the GIS User Community